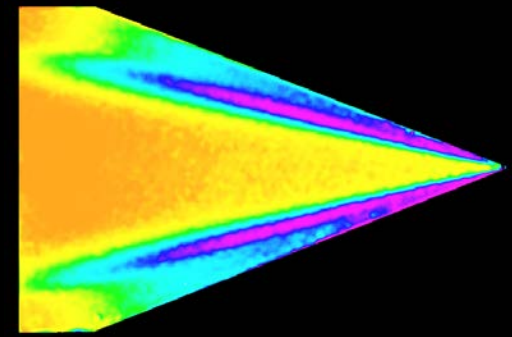
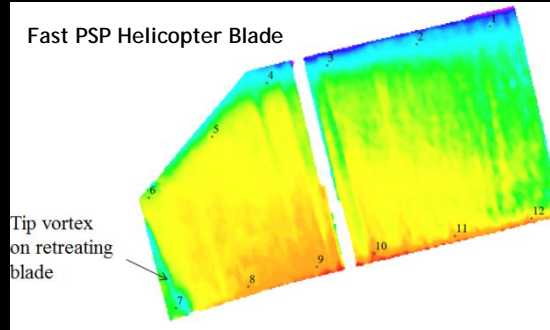


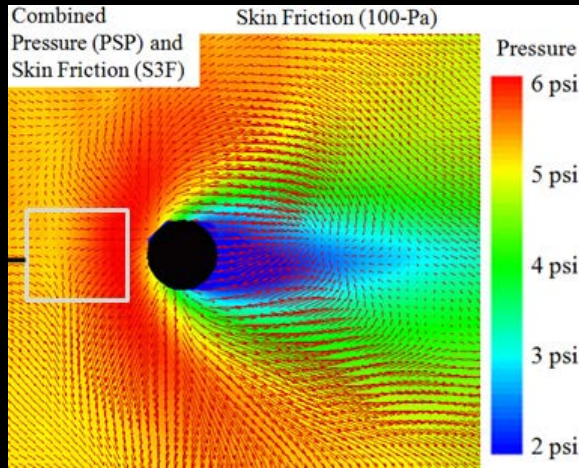
ISSI

A solution to your problem

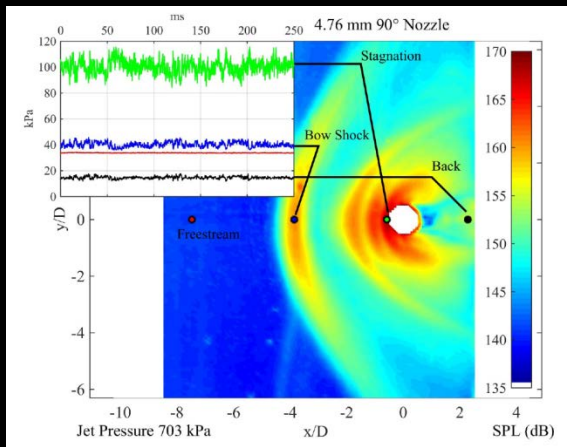
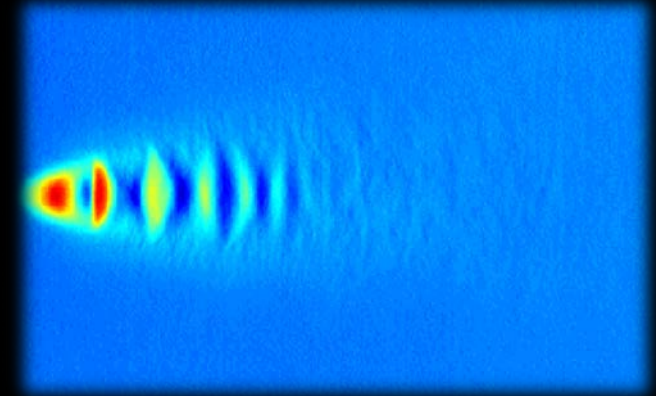
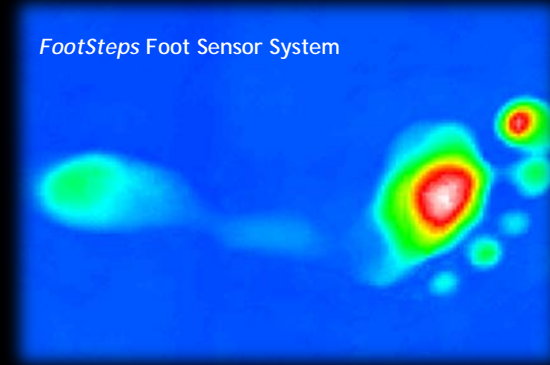
Fast PSP Helicopter Blade



Looking for^{AN}
Innovative
Solution?



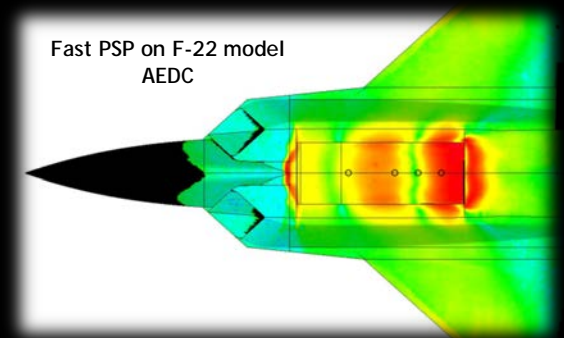
FootSteps Foot Sensor System



7610 McEwen Road
Dayton, OH 45459

spalluconi@innssi.com
Phone: (937)-630-3012
Fax: (937)-630-3015

www.psp-tsp.com



COMPANY

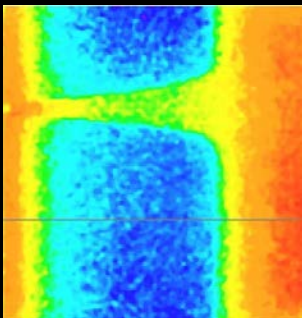
Founded in 1995, Innovative Scientific Solutions Incorporated is an engineering research and development company providing innovative measurement and instrumentation solutions in the areas of Fluid Dynamics, Aerodynamics, Combustion Analysis, and Pressure/Force quantification.

Why ISSI?

We have the expertise and experience to develop and apply advanced optical diagnostic techniques and to produce specialized instrumentation to support these technologies. We are often called upon to acquire data for the extension and validation of Computational Fluid Dynamics (CFD) models.

Who does ISSI work with?

ISSI supports DoD, NASA, National Institutes of Health (NIH), and other federal customers, as well as U.S. industry and academic laboratories. We work with government and industry laboratories in Europe, Asia, and South America, as well as academic organizations worldwide.



MEASUREMENT CAPABILITIES

- Aerodynamic pressure measurements on wind tunnel models
 - Helicopter rotors
 - Aircraft models
 - Architectural models
 - Automotive models
- Film-cooling effectiveness measurements on turbine blade mockups
- Oxygen concentration measurements
- Skin Friction and normal force measurements (S3F)
 - Aircraft tires
 - Automotive tires
 - Ship hulls
 - Feet and shoes
 - Insect locomotion

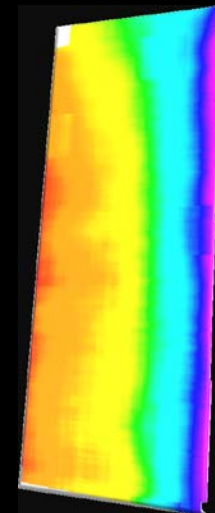
What is PSP/TSP?

PSP & TSP are optical sensors for pressure and temperature measurements. A paint-like coating is applied to a surface and the fluorescence of the paint is monitored with a camera. The paint fluorescence is a function of the local barometric pressure (PSP) or the local temperature (TSP) and each camera pixel acts as a pressure transducer (PSP) or thermocouple (TSP).

What is S3F?

Surface Stress Sensitive Film (S3F) is an optical instrument for measurements of skin friction and pressure. The basis of this measurement is an elastic film that deforms under the action of the applied loads. The reaction of the film is monitored by imaging the surface.

CORE ADVANTAGE



Innovative Scientific Solutions, Inc. is a small business with exceptional technical expertise and the ability to rapidly respond to dynamic customer needs.

- [Engineering Research](#)
- [Measurement Validation](#)
- [Instrumentation Design](#)
- [Fabrication](#)
- [Academic Educational Tools](#)
- [Sales and Service](#)

Visit us online at:
www.psp-tsp.com

Instrumentation

In addition to measurement capabilities, ISSI also produces instrumentation for PSP/TSP as well as other industries.



Instrumentation Products

- Calibration systems for PSP/TSP
- Pulse/delay generators
- Lens controllers for remote control of Canon® EF lenses or CCTV lenses
- The latest in high-power LED technology in our LED products
- PSP/TSP systems scaled from small-scale research to large-scale production

