

How To Provide Drawing Access across the Network

© Copyright PadgettMachine Inc.

ERPQMS

Revision V138
Revision date 1/14/2017

Help Files For ERP Quit

- Customers, Vendors, Inventory, etc.
- Parts and Configuration Management** click
- Quote System
- Inventory Management System(Purchasing)
- Customer Order System(Certs,Backlog)
- Quality System(Corrective,Calibration, Docs)
- System Administrator

ERPQMS Locations
Frontend: C:\ERPQMS\ERPQMS.accdb
Data: C:\ERPQMS\BackEnd Data\ERPQMS2016\DataMaster_1.accdb
Help:

Click To Backup System

© Copyright PadgettMachine Inc.

ERPQMS

Revision V138
Revision date 1/14/2017

Help Files For ERP Quit

- Engineering Parts and Assembly Specification
- Standard Routing Editor(Proceses)** click
- Process and Skills Editor
- Organizational Analysis
- Return to Main

ERPQMS Locations
Frontend: C:\ERPQMS\ERPQMS.accdb
Data: C:\ERPQMS\BackEnd Data\ERPQMS2016\DataMaster_1.accdb
Help:

Click To Backup System

frmParts - Microsoft Access

Home Create External Data Database Tools Acrobat

Part Info and Drawings Part Specifications Engineering Change Records

Add New Part Used In Find Part No. Help

Find Master Drawing No. ITAR Part

Part Number / Name: 16W048-21 **Part No.: Do not use ? , * , # or * symbol:** **Number Do not use spaces on the 1st digit**

RFQ or PO Number: Date Inspection: 8/15/2016 Inv Type: Assy

Part Description: ASSY Unit Price: \$850.00

Sampling Procedure: Inspection Lvl: Sample Qty:

Inspection Desc:

Graphic Image Doc All (default) Add Link to Drawing Follow Link

Master Drawing	Rev Lvl	ECO No.		
Sketch				
View 3				
View 4				
View 5				
View 6				
View 7				
View 8				
View 9				
View 10				

Record: 1 of 5 No Filter Search

Form View

select part from drop down field

frmParts - Microsoft Access

Home Create External Data Database Tools Acrobat

Part Info and Drawings Part Specifications Engineering Change Records

Add New Part Used In Find Part No. Help

Find Master Drawing No. ITAR Part

Part Number / Name: 16W048-21 **Part No.: Do not use ? , * , # or * symbol:** **Number Do not use spaces on the 1st digit**

RFQ or PO Number: Date Inspection: 8/15/2016 Inv Type: Assy

Part Description: ASSY Unit Price: \$850.00

Sampling Procedure: Inspection Lvl: Sample Qty:

Inspection Desc:

Graphic Image Doc All (default) Add Link to Drawing Follow Link

Master Drawing	Rev Lvl	ECO No.		
Sketch				
View 3				
View 4				
View 5				
View 6				
View 7				
View 8				
View 9				
View 10				

Record: 1 of 5 No Filter Search

Form View

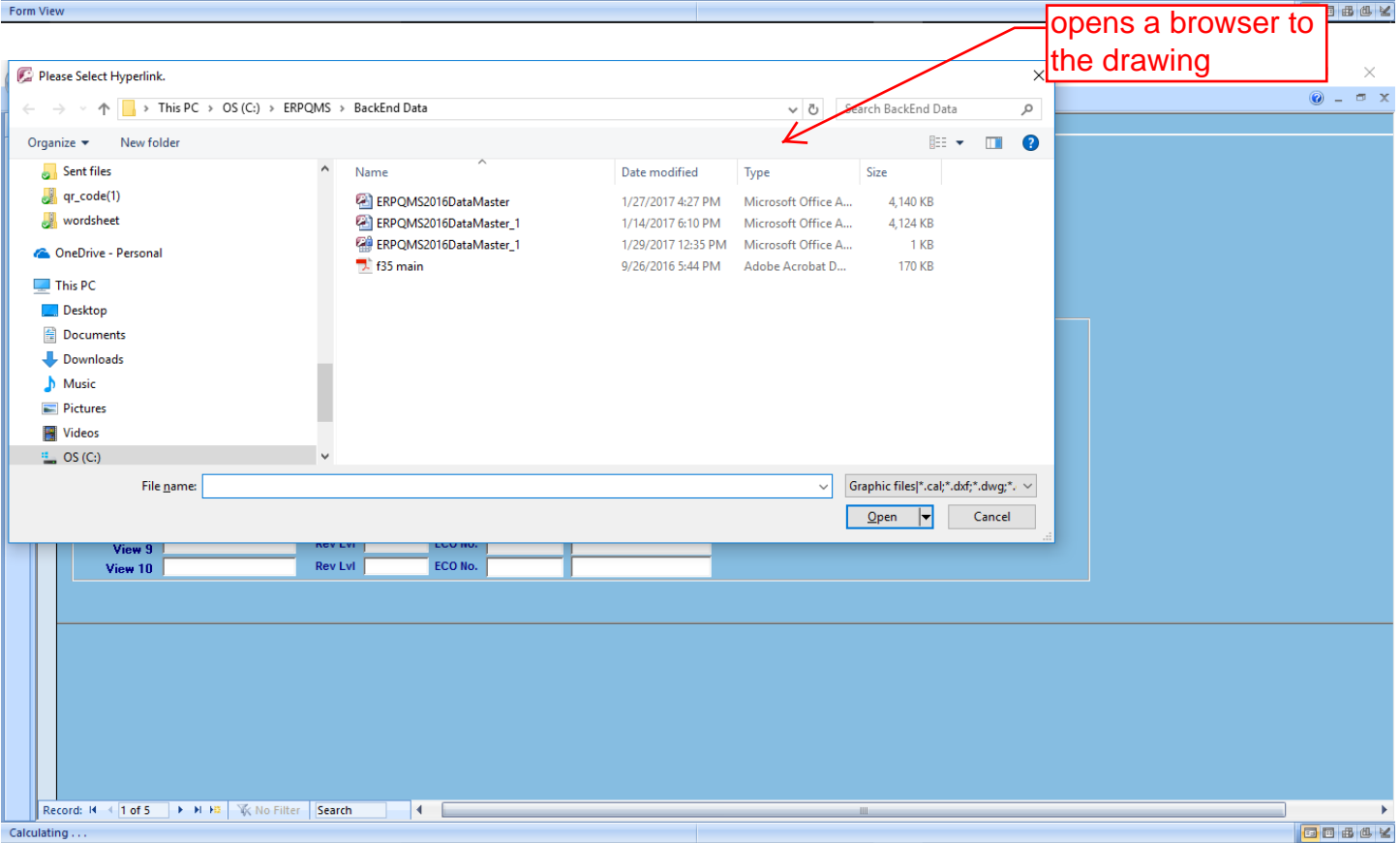
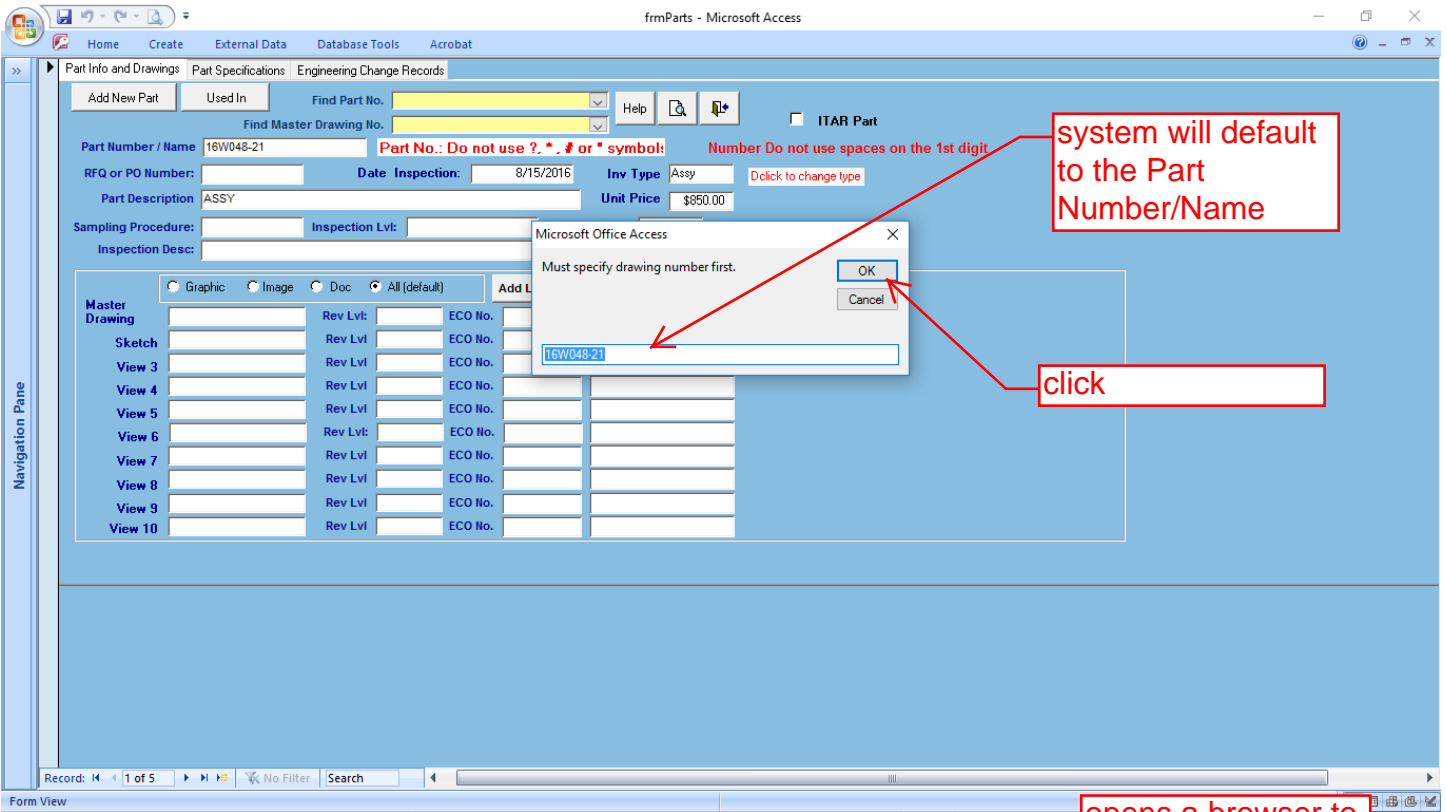
click

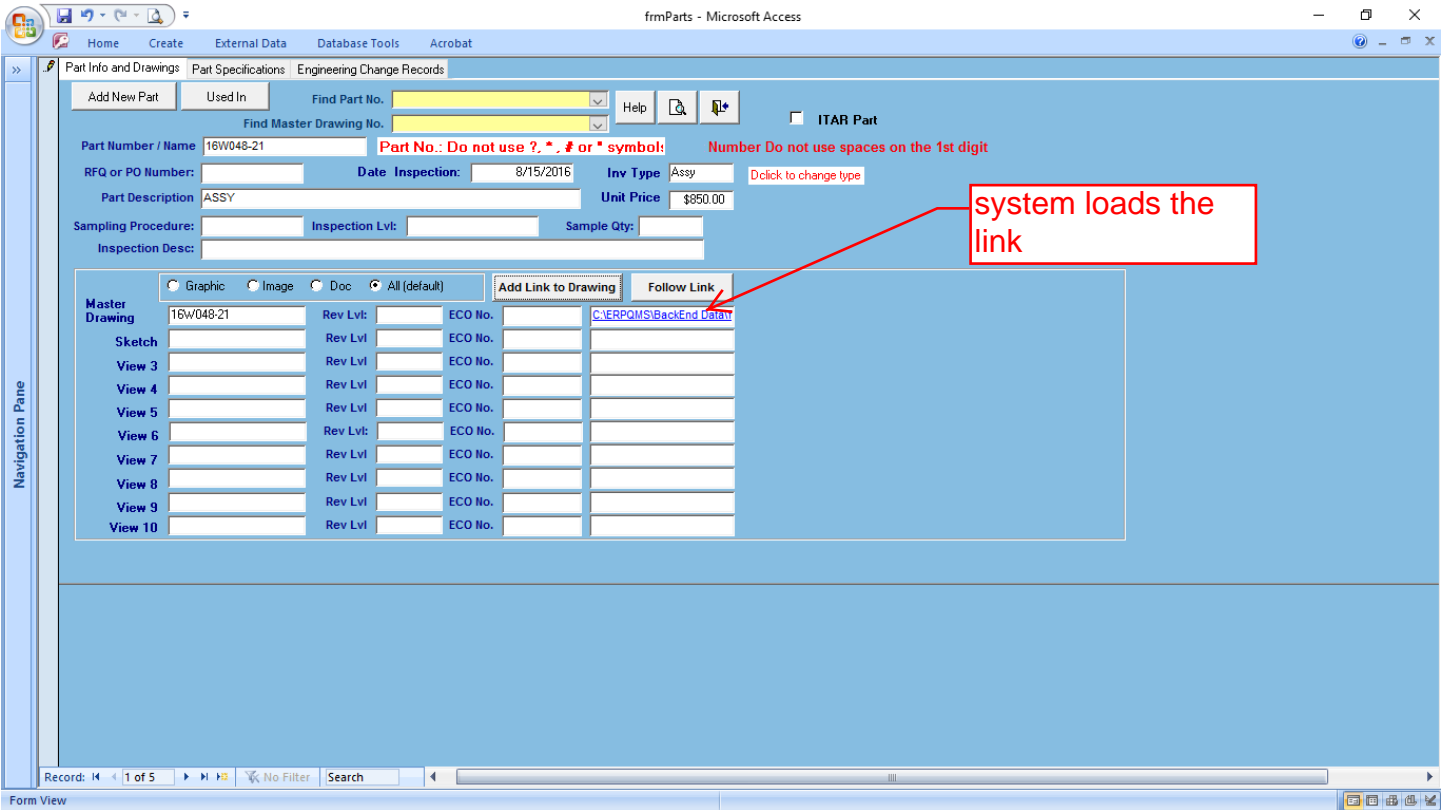
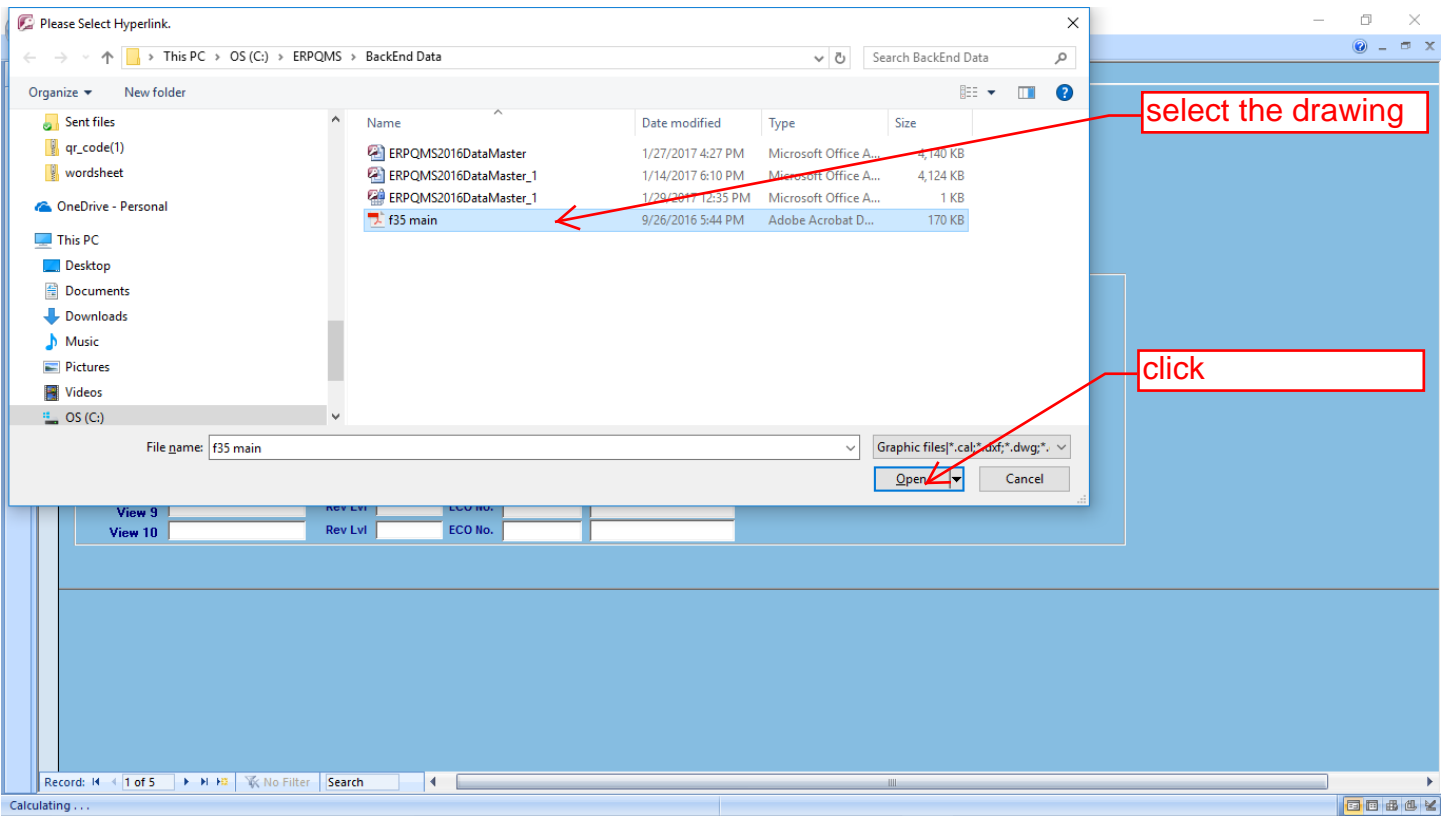
systems defaults to number 1--you may change here to another number

this is drawing number 1

Microsoft Office Access

Link which drawing number?





frmParts - Microsoft Access

Home Create External Data Database Tools Acrobat

Part Info and Drawings Part Specifications Engineering Change Records

Add New Pat Used In Find Part No. Find Master Drawing No. Help ITAR Part

Part Number / Name: 16W048-21 **Part No.: Do not use ? , * , # or * symbol!** Number Do not use spaces on the 1st digit

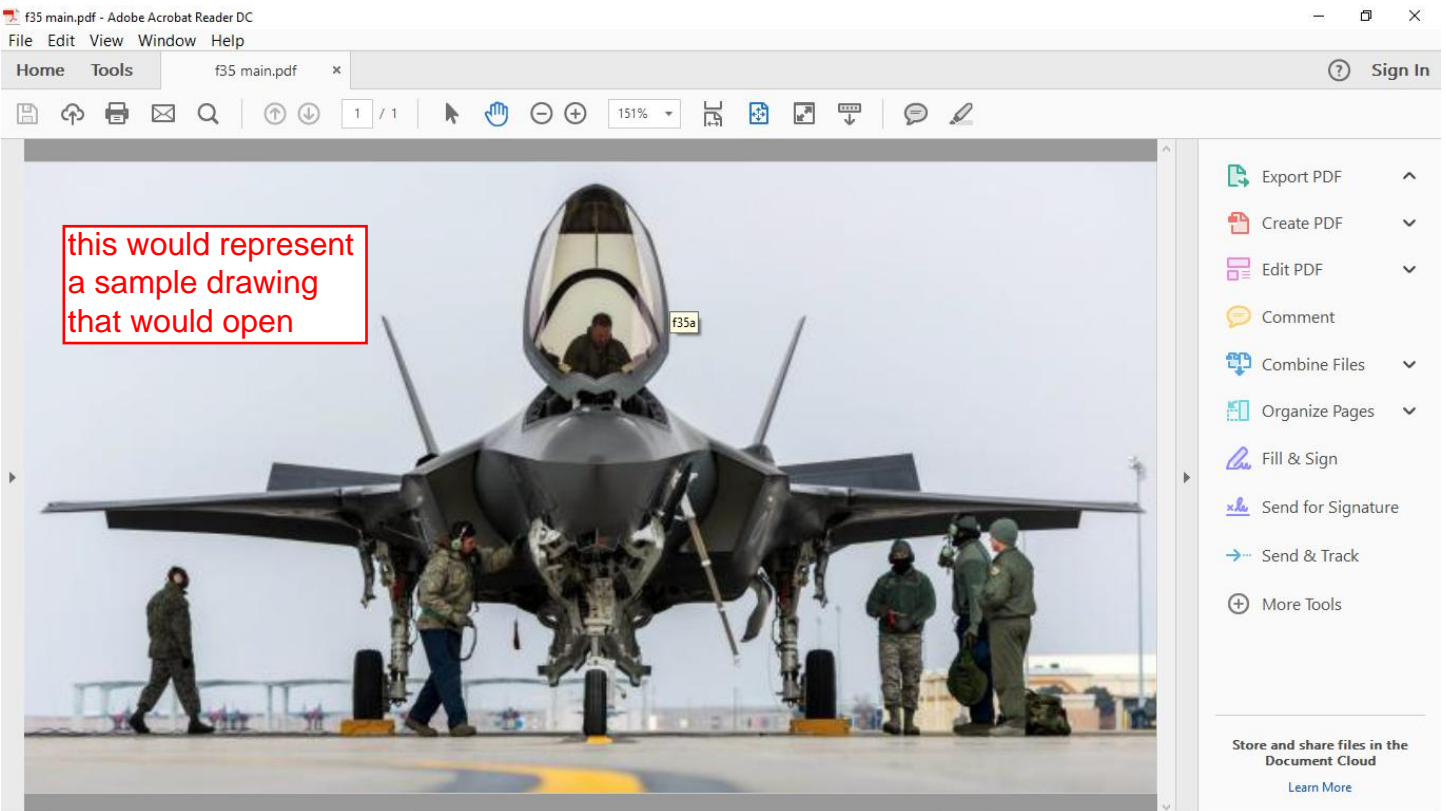
RFQ or PO Number: Date Inspection: 8/15/2016 Inv Type: Assy **click** Dclick to change type

Part Description: ASSY Unit Price: \$850.00

Sampling Procedure: Inspection Lvl: Sample Qty: Inspection Desc:

Master Drawing	Graphic	Image	Doc	All (default)	Add Link to Drawing	Follow Link
16W048-21						C:\ERPOMS\BackEnd>Data\
Sketch						
View 3						
View 4						
View 5						
View 6						
View 7						
View 8						
View 9						
View 10						

Record: 1 of 5 No Filter Search



quote switchboard - Microsoft Access

Home Create External Data Database Tools Acrobat

© Copyright PadgettMachine Inc.

ERPQMS

Help Files For ERP Quit

Revision V138
Revision date 1/14/2017

Enter or Update Quote ← Available in the Quote Module-Click

Print Quote or Quote Group

Bid Board

Backlog by Quote

Quote Analysis

Return to Main

ERPQMS Locations

Frontend: C:\ERPQMS\ERPQMS.accdb
Data: C:\ERPQMS\BackEnd Data\ERPQMS2016DataMaster_1.accdb
Help:

[Click To Backup System](#)

MANAGEMENT
Proven People Expertise Optimum Model Selection Tools & Systems

LEADERSHIP
Processes & Best Practices QUALITY CONSISTENCY EFFICIENCY VALUE

Adequate Resources/ Systems

To Build Quality Products

Form View

frmQuote - Microsoft Access

Home Create External Data Database Tools Acrobat

Quote Information Prepare Bid Contract Terms Quote Reports

Selected Quote 5

New Quote or New Quote Group

Quote Group Information

Customer Cyclone Aviation Company Contact Purchasing

Quote Grp QG0005 Assy No

Quote Contact

ST=Quote Status Normal Entry Mode

Part No.	Qty	LeadTime	Submit Date	PreparedBy	ST	Quote#
16W048-21	1	As Required	1/29/2017	Demo	1	5
*	0	As Required	1/29/2017	#Error	1	0

Record: 1 of 1

PartNo 16W048-21 ASST DrawingNo 16W048-21

Drawing [C:\ERPQMS\Back](#) Sketch Rev Level ECO No. ITAR Part

Copy Quote Group

QG Number
 Part Number

Drawing Number
 Assy Number

Select Quote Group

Double click field to change group number or quote contact.

PartNo	QuoteGroup	QuoteNo	Organization Name	Submit Date	JobName
16W048-21	QG0005	5	Cyclone Aviation	1/29/2017	
16W391-9	QG0004	4	Cyclone Aviation	10/12/2016	

Record: 1 of 1 Filtered Search

Form View

notice hyper link

DD Click to open drawing

select the part to quote

Double Click Part Number Jumps to Part Load Page to Edit Part

frmQuote - Microsoft Access

Home Create External Data Database Tools Acrobat

Quote Information Prepare Bid Contract Terms Quote Reports

Selected Quote 5

New Quote or New Quote Group

Quote Group Information

Customer Cyclone Aviation Company Contact Purchasing

Quote Grp QG0005 Assy No [] Quote Contact [] ST=Quote Status Normal Entry Mode

Part No.	Qty	LeadTime	Submit Date	PreparedBy	ST	Quote#
16W048-21	1	As Required	1/29/2017	Demo	1	5
*	0	As Required	1/29/2017	#Error	1	0

Record: 1 of 1

PartNo 16W048-21 Assy DrawingNo 16W048-21

Drawing CAEPQMSBask Sketch Rev Level ECO No. ITAR Part

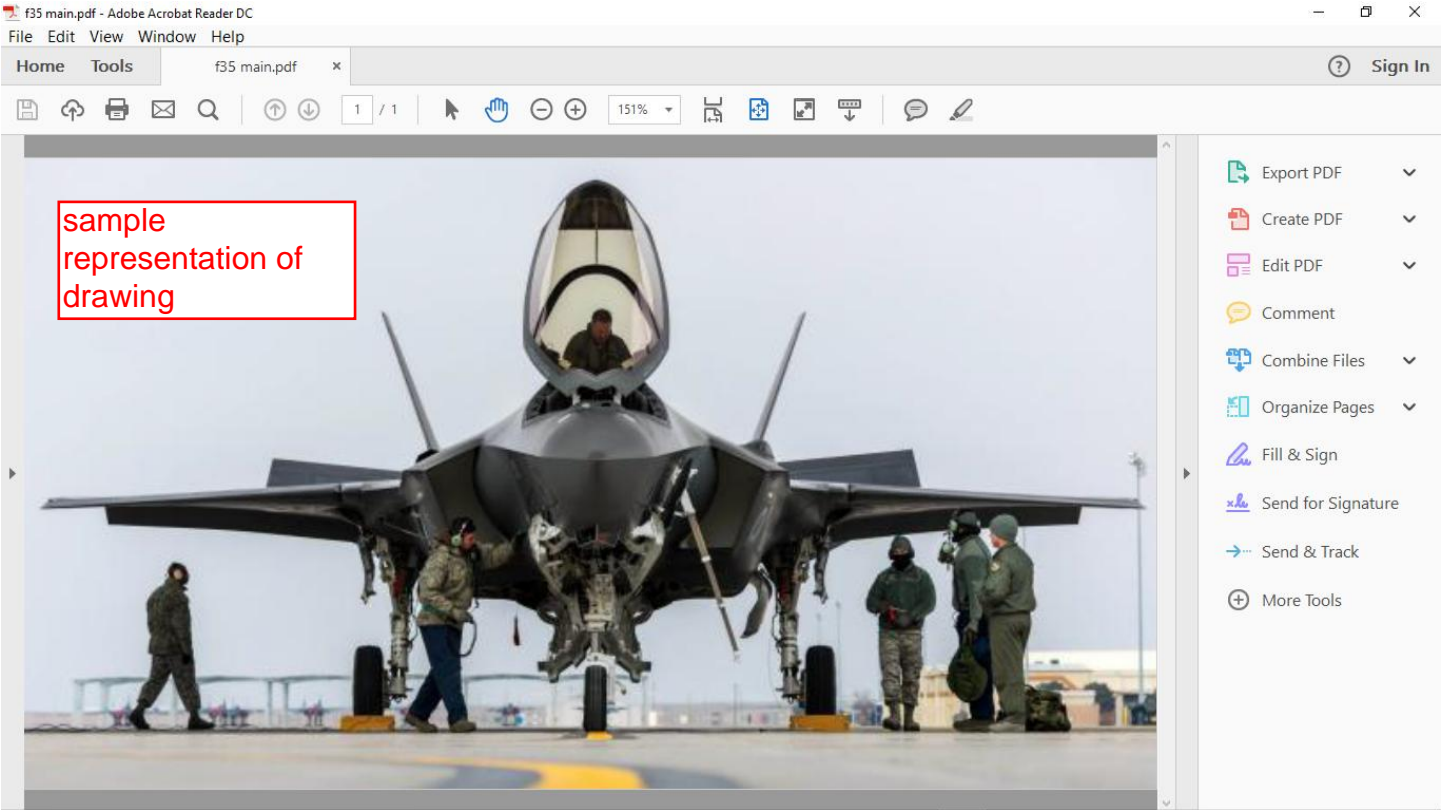
Copy Quote Group

QG Number
 Drawing Number
 Description
 Part Number
 Assy Number
 Select Quote Group

Double click field to change group number or quote contact.

DD Click

Double Click Part Number Jumps to Part Load Page to Edit Part



Work Order Switchboard - Microsoft Access

Home Create External Data Database Tools Acrobat

Navigation Pane

MANAGEMENT
Proves People Expertise Optimum Model Selection Tools & Systems

LEADERSHIP
Processes & Best Practices

QUALITY
CONSISTENCY EFFICIENCY VALUE

Adequate Resources/ Systems

To Build Quality Products

© Copyright PadgettMachine Inc.

ERPQMS

Revision V138
Revision date 1/14/2017

[Help Files For ERP](#) [Quit](#)

- Enter or Update Customer Order
- Print Certificate of Conformance
- Enter or Update Shipments
- Enter or Update Invoices
- Print Backlog Reports (Customer Orders)
- Time Reporting
- Return to Main

ERPQMS Locations

Frontend: C:\ERPQMS\ERPQMS.accdb
Data: C:\ERPQMS\BackEnd Data\ERPQMS2016Data\Master_1.accdb
Help:

Click To Backup System

Form View

available in the Customer Order Module--Click

frmCustomerOrder - Microsoft Access

Home Create External Data Database Tools Acrobat

Navigation Pane

Customer Order Information Routing Work Order Comments Ship-to Information Assembly Materials List Reports

Customer PO: CLY001 Do not use ?, * , # or " symbols [New Customer PO](#)

Customer: Cyclone Aviation [Ref Quote](#)

Contact: Purchasing [More Contacts](#) Double Click Production Status [Status Codes](#)

PartNo	Quantity	Type	Material	CostEach	Issue Dat	DueDate	AgreeDat	WO	Status
16W048-21	1	1	Tubing 2.5 In RD	\$850.0000	9/15/2016	9/15/2016	9/15/2016	4	4
16W391-9	1	1		\$10.0000	5/16/2016	5/16/2016	5/16/2016	1	4
Lathe Work Order	1	1		\$12.0000	8/4/2016	8/4/2016	8/4/2016	3	4
*									

Record: 1 of 3

PartNo: 16W048-21 DrawingNo: 16W048-21

Drawing: [C:\ERPQMS\Back](#)

Type: Assy ITARPart

Copy RFQ:

Copy WO:

PD Number Drawing Number Part Number WO Number [Select Customer Order](#)

DD Click Part Number Links to Part Form

Record: 1 of 1 Filtered Search

Form View

DD Click to open drawing

