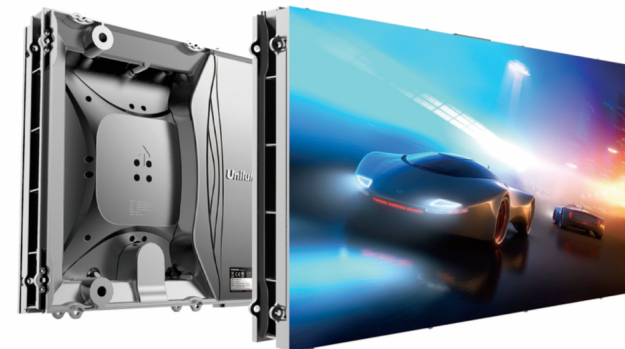


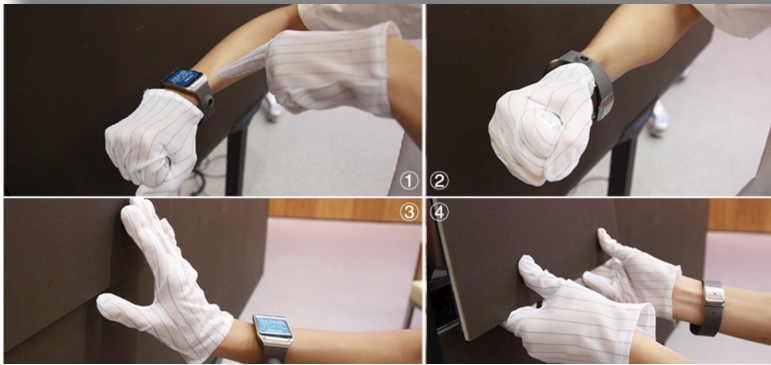
UPANELS

100% Front Access
ADA Compliant
16:9 LED Display Cabinet

The Unilumin logo, featuring the brand name in blue sans-serif font with a small red and green dot above the 'i'.

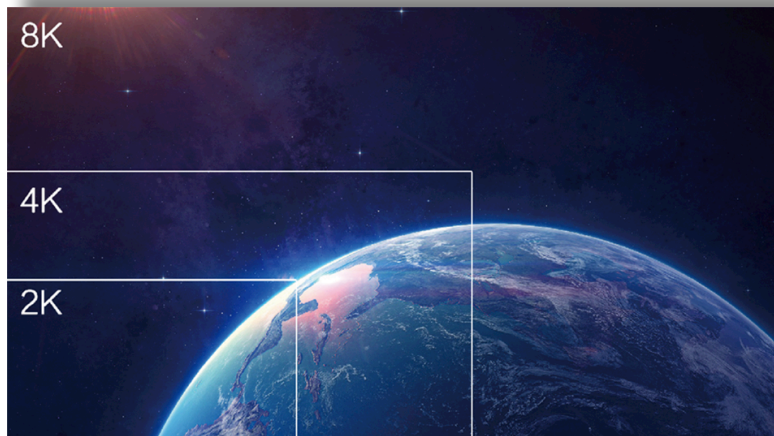
8350 Parkline Blvd. Ste 15,
Orlando FL, 32809
sales@unilumin-usa.com
1-844-263-4508





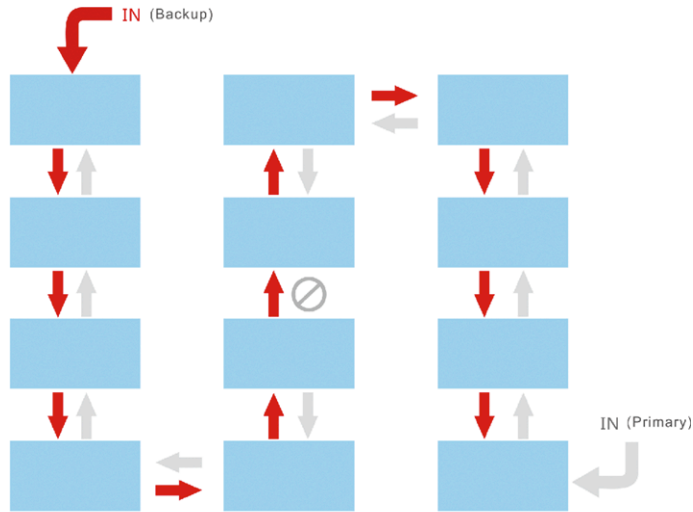
Simple One Person Maintenance

A Smart Watch Activates an Internal Actuator Ejecting the Module requiring replacement.



16:9 Aspect Ratio

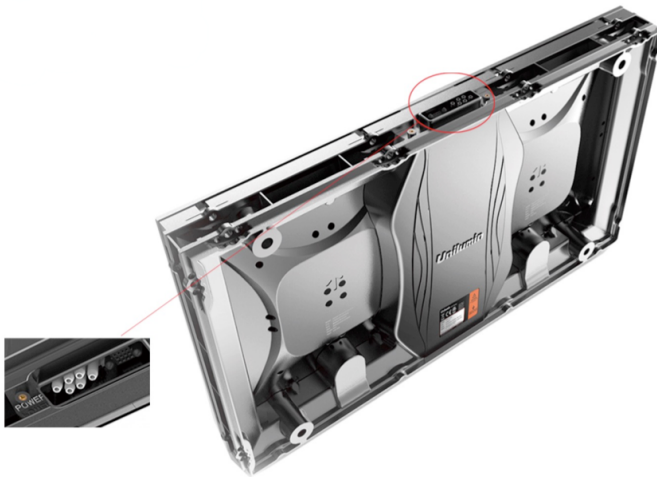
16:9 Cabinets Maintain 16:9 Ratio when H and V Cabinets are Equal. $2 \times 2 = 16:9$, $3 \times 3 = 16:9$ etc.

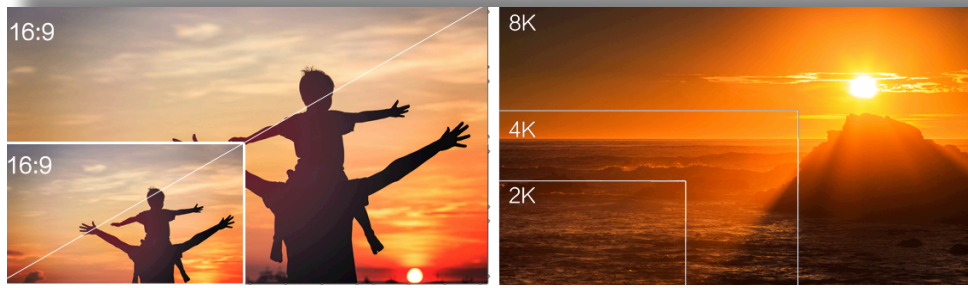


Redundant Power and Data

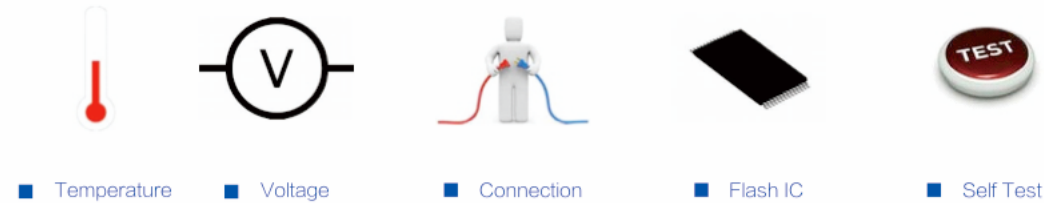
Bidirectional Power and Data Paths Provided for Increased Reliability for Mission Critical Applications

Frames Ship Separate from Modules for Fast and Safe Assembly

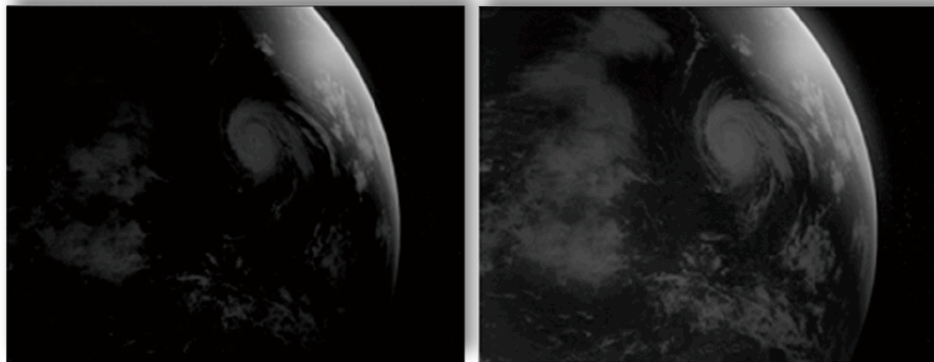




Maintains 16:9 Aspect When Display Scales With Even H and V Tiles.



Automatic Monitoring of Voltage, Temperature, Signal Health, LED Modules

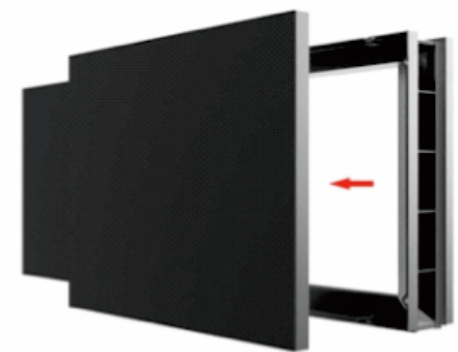


Standard LED

Unilumin LED

Better Contrast at Low Brightness than Standard LED Technology

Installation Options Include ADA Direct Wall Mount, Free Standing Floor Mount Frames and Hanging Beams



Modules and Precision Aluminum Cabinet are Shipped Separately. Install Cabinets Quickly and then Install the Protected LED Modules

Hang It! With a Simple Hanging Beam 20 LED Tiles can be Hung in Each Column Without Additional Structure

Wall Mount ADA or Frames can be used for Rear Projection Cube Retrofits

UPanelS

Parameter	Upanel0.9S	Upanel1.2S	Upanel1.5S	UPanel1.9S
Pixel pitch	0.953mm	1.27mm	1.58mm	1.9mm
Pixel configuration	1R1G1B	1R1G1B	1R1G1B	1R1G1B
LED type	3-in-1 SMD0606	3-in-1 SMD1010	3-in-1 SMD1010	3-in-1 SMD1010
Brightness	600 cd/m ²	800 cd/m ²	800 cd/m ²	800 cd/m ²
Color temperature	2000-9500K Adjustable	2000-9500K Adjustable	2000-9500K Adjustable	2000-9500K Adjustable
Viewing angle	H: 160°; V:160°	H: 160°; V:160°	H: 160°; V:160°	H160°/V160°S
Pixel density	1,101,068 pixels/m ²	620,001 pixels/m ²	396,384 pixels/m ²	75,267 pixels/m ²
Maintenance	Front Service	Front Service	Front Service	Front Service
Recommended viewing distance	1.0 M	1.2 M	1.6 M	1.9 M
Weight	7.5 kg/panel	7.5 kg/panel	7.5 kg/panel	7.5 kg/16.5 lbs panel
Module size	W304.96mm×H343.08mm×D41mm	W304.96mm×H343.08mm×D41mm	W304.96mm×H343.08mm×D41mm	W304.96mm×H343.08mm×D41mm
Cabinet size	W609.92mm×H343.08mm×D71mm	W609.92mm×H343.08mm×D71mm	W609.92mm×H343.08mm×D71mm	W609.92mm×H343.08mm×D71mm
Area	0.209 m ²	0.209 m ²	0.209 m ²	0.209 m ²
Material	Diecast Aluminum	Diecast Aluminum	Diecast Aluminum	Diecast Aluminum
Aspect ratio	16:09	16:09	16:09	16:09
Surface evenness	≤0.1mm	≤0.1mm	≤0.1mm	≤0.1mm
Operating Temperature/Humidity	-10℃~+45℃/10~80%RH	-10℃~+45℃/10~80%RH	-10℃~+45℃/10~80%RH	-10℃~+45℃/10~80%RH
Storage Temperature/Humidity	-10℃~+55℃/10~80%RH	-10℃~+55℃/10~80%RH	-10℃~+55℃/10~80%RH	-10℃~+55℃/10~80%RH
Pixels per panel	640×360 Dots	480×270 Dots	384×216 Dots	320 ×180
Pixel deviation	≤2.5%	≤2.5%	≤2.5%	≤2.5%
Luminance uniformity	≥98%	≥98%	≥98%	≥98%
Chroma uniformity	±0.0015 C x , Cy	±0.0015 C x , Cy	±0.0015 C x , Cy	±0.0015 C x , Cy
Brightness control	Manual/Automatic	Manual/Automatic	Manual/Automatic	Manual/Automatic
Calibration	Support brightness and chroma	Support brightness and chroma	Support brightness and chroma	Supports brightness and chroma
Contrast ratio	3000:1	3000:1	5000:1	5000:1
Video frame rate	50/60 Hz	50/60 Hz	50/60 Hz	50/60 Hz
Refresh rate	3840 Hz	3840 Hz	3840 Hz	3840 Hz
Input voltage	100-240V~	100-240V~	100-240V~	100-240V~
Input power frequency	50~60 Hz	50~60 Hz	50~60 Hz	50~60 Hz
Input power <max>	120W/ panel	150W/ panel	150W/ panel	150W/ panel
Input power <typical>	40W /panel	50W /panel	50W /panel	50W /panel
Lifetime	≥100,000 Hours	≥100,000 Hours	≥100,000 Hours	≥100,000 Hours
LED Wavelength	R:620~630nm G:520~535nm B:465~475nm	R:620~630nm G:520~535nm B:465~475nm	R:620~630nm G:520~535nm B:465~475nm	R:620~630nm G:520~535nm B:465~475nm
LED Drive Method	1/30 scan, Constant Current Drive	1/27 scan, Constant Current Drive	1/27 scan, Constant Current Drive	1/30 scan, Constant Current
Input video	DVI/HDMI/VGA/SDI/DP/AV/S-Video, etc	DVI/HDMI/VGA/SDI/DP/AV/S-Video, etc	DVI/HDMI/VGA/SDI/DP/AV/S-Video, etc	DVI/HDMI/VGA/SDI/DP/AV/S-Video, etc
Rigging method	Floor Stacked	Floor Stacked	Floor Stacked	Floor Stacked
Data interconnection	CAT5 Cable	CAT5 Cable	CAT5 Cable	CAT5 Cable