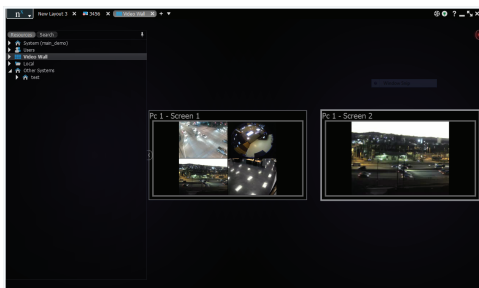


## Nx Video Wall = Total Control.

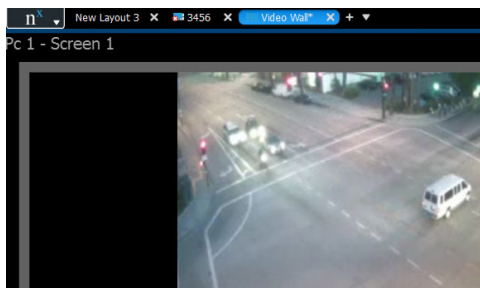
Control large video walls and drive remote monitors from any Nx Witness™ client.



### Remote Monitor Control.

Nx Video Wall lets users remotely control single or multiple monitor installations remotely, in real-time, over LAN or WAN connections.

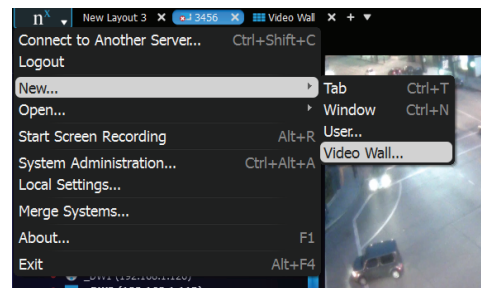
Using Nx Video Wall users can choose to push individual video streams, layouts, and even their entire stream to any monitor, any time, anywhere in real-time.



### Infinitely Scalable.

From one monitor and one operator to hundreds of monitors and multiple operators, scalability is simple to implement and use.

Nx Witness users can customize and scale Nx Video Wall to their needs with simple, affordable licensing for every size video wall or remote monitor configuration.



### Add It At Any Time.

Nx Video Wall is built-in to every version of Nx Witness and works with Windows or Ubuntu Linux computers.

Nx Witness users can activate Nx Video Wall at any time, any stage of a project, and deploy it only where it is needed - control rooms, spot-monitors, and more!

# Nx Video Wall.

## Video Wall Control. Made Simple.



### Remote Monitor Control.

Send single video streams, entire layouts, server health monitoring statistics, or cast your workstation to any number of monitors running the Nx Video Wall application.



### Works via LAN or WAN

As Nx Video Wall is built right into Nx Witness and sits on the Nx Witness server architecture it has the ability to control monitors both locally and remotely through connected systems.

That means users can control monitors anywhere in the world.

### Cross Platform Control.

Nx Video Wall can be created and controlled from any Nx Witness thick client application - on Mac, Windows, or Ubuntu Linux.

### Any Size System.

Nx Video Wall is available on any Nx Witness system (v2.3 and later) - from one monitor to hundreds of monitors - the solution works right out of the box.

### Intuitive & Simple.

Nx Video Wall is simple and Intuitive to use - taking just minutes to deploy and begin using.

### Multiple Operators

Nx Video Wall allows multiple operators to control the video wall concurrently.

### Built Into Nx Witness

Video wall is built-in to every version of Nx Witness and is ready to be deployed at any time.

### Free to Try.

Want to try out Nx Video Wall before you buy it? No problem - contact us today to learn more!

### Nx Witness 2.3 Features

#### Supported Operating Systems.

- Windows XP or later.
- Ubuntu Linux 12.04 or later.
- Mac OS X 10.6 or later (client only)



#### Supported Devices & Manufacturers.



- Any ONVIF Profile S Device.
- Any RTSP video stream.
- Integrate any device with the Nx SDK.
- Most security surveillance brands already supported. [Acti](#), [Arecontvision](#), [Axis](#), [Brickcom](#), [Canon](#), [Dahua](#), [Digital Watchdog](#), [D-Link](#), [Hikvision](#), [IQinVision](#), [ISD](#), [Sony](#), [Stardot](#), [Vista](#), [Vivotek](#), and more.
- More brands and devices added on every release.

#### Unique Enterprise Features

##### No Single Point of Failure

- Connect to any server in the system to view the entire system..

##### Automatic Camera Failover

- Enable any server(s) as a failover server to create a high-reliability system.

##### Smart Search Options

- Use any search feature you prefer - smart motion, keyword(s), time-slice, or calendar to find and share events.

##### Universal Fisheye Dewarping

- Automatically or manually detect and dewarp any fisheye lens - including panamorph lenses.

##### Advanced Video Export

- Export single or multiple video events into standard or executable format.

##### Server Health Monitoring

- Drag & Drop servers onto flexible grid interface to view CPU, network, memory, and HDD status.

##### One-Click System-Wide Updates

- Upgrade your entire system - servers & edge cameras with the click of a button.