

Vermeer®

Brush Chipper

BC1000XL



Performance and Safety

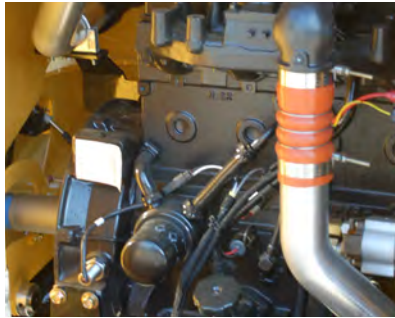
The Vermeer BC1000XL provides performance and safety on your jobsite.

Equipped with either a CAT 49 hp (36.5 kW) Tier 4a or Cummins 85 hp (63.4 kW) Tier 3 engine, the BC1000XL delivers efficiency to chip through tough material, while the 25-gal (94.6 L) fuel tank cuts time spent refueling and increases time spent on the job.

The heavy-duty, all-steel engine enclosure is designed to hold up to daily use and wear. The unit's large feed opening enables you to process material up to 12" (30.5 cm) in diameter, which helps boost productivity by reducing the need to trim material — making the BC1000XL an ideal machine for line-clearing contractors, rental yards and municipalities.

The rubber-torsion suspension provides smooth towing action while the control panel and operational controls are located at the rear of the machine for easy access and monitoring during machine operation.

When you need a quality, reliable brush chipper, look to a name you can trust — Vermeer.



Engine options to fit your needs.

With two engine options providing either 49 hp (36.5 kW) or 85 hp (63.4 kW), contractors have the ability to choose an appropriate horsepower based on their needs.



Operator safety.

Combined with the patented Bottom Feed Stop Bar is the four-position upper feed control bar with dual stop positions and forward / reverse feed positions. Mounted over the feed table, it enables the operator to stop the feed rollers and select forward or reverse operations. Dual reset / hold-to-run buttons allow the operator to readily reset the Bottom Feed Stop Bar.



A clutchless PTO system

allows the cutter to be engaged without using a traditional slip clutch or idler pulley and without sliding the engine. The system is simple to maintain — once under the shield, belt changes are easily accomplished without the use of tools.

Brush Chipper



The patented SmartFeed system helps increase operator productivity while reducing strain on vital engine parts. The feed-sensing control system monitors engine rpm and automatically stops or reverses the rollers when feeding larger, hardwood material.



A large rectangular 12" x 17" (30.5 cm x 43.2 cm) feed opening helps boost productivity by reducing the need to trim material before feeding it into the chipper.

BC1000XL Specifications

General

Weight (engine option one): 4680 lb (2122.8 kg)
Weight (engine option two): 4860 lb (2204.5 kg)
Transport length (feed table up, tongue in): 12.5' (3.8 m)
Transport width: 66.5" (168.9 cm)
Transport height: 101" (256.5 cm)

Engine Option One

Make and model: CAT C2.2L Tier 4a
Horsepower: 49 hp (36.5 kW)
Max torque: 103 ft-lb (139.6 Nm)
Fuel type: Diesel
Number of cylinders: 4
Cooling medium: Liquid

Engine Option Two

Make and model: Cummins B3.3 Turbo Tier 3
Horsepower: 85 hp (63.4 kW)
Max torque: 224 ft-lb (303.7 Nm)
Fuel type: Diesel
Number of cylinders: 4
Cooling medium: Liquid

Capacities

Fuel tank: 25 gal (94.6 L)
Hydraulic tank: 7 gal (26.5 L)

Cutting System

Drum size: 20" dia. x 20" wide (50.8 cm dia. x 50.8 cm)
Speed: 2000 rpm
Knives: Two A8 chipper steel
Shear bar: Four usable edges

Feed/Discharge System

Infeed throat/feed capacity: 12" x 17" (30.5 cm x 43.2 cm)
Infeed opening: 52" x 32" (132.1 cm x 81.3 cm)
Feed table length: 32" (81.3 cm)
Feed table height: 26" (66 cm)
Feed roller style: Horizontal
Infeed rate: 105 fpm (32 m/min)

Chassis

Frame: .25" x 7" (.6 cm x 17.8 cm) Z channel
Tires (option 1): ST225/75/R15 Load Range D
Tires (option 2): ST235/80/R16 Load Range E
Axle/suspension: 5200 lb (2358.7 kg) rubber torsion
Optional axle/suspension for engine option 2:
7000 lb (3175.1 kg)
Electric brakes with breakaway switch

Electrical

System voltage: 12 V
Lights: Stop, turn, tail, license

European / Australian

To help meet international demand, the BC1000XL is also offered in two market-specific configurations:

- Designed for countries whose traffic drives on the left side of the road, optional left-side controls for the cutter drum engagement lever and control panel are available.



The 3-year / 3,000-hour extended limited warranty on drum housings, cutter drums, shaft, and ring-feeder hubs offers you peace of mind, in addition to the 1-year / 1,000-hour Vermeer equipment limited warranty.

The Vermeer dealer network: Reliable support, all over the world.



With nearly 200 locations across the globe - you're never far from an independent, authorized Vermeer dealer. Our dealers are in place to support your success with product expertise that's second to none.



When you need service, you can count on your local Vermeer dealer. With multiple locations, remote service trucks, and factory-offered technician training, your local Vermeer dealer offers reliable service that keeps your equipment running.



Vermeer parts are designed and manufactured to original specifications, so whether they're new parts or replacement parts, they'll live up to the Vermeer name.



Vermeer EMEA
(Europe, Middle East, Africa and CIS)
P.O. Box 323
4460 AS Goes
the Netherlands
Phone: +31 113 272700
Fax: +31 113 272727

Vermeer Corporation
1210 Vermeer Road East
P.O. Box 200
Pella, Iowa 50219 U.S.A.
Phone: (641) 628-3141
Fax: (641) 621-7773
International fax: +1 (641) 621-7730
www.vermeer.com

Vermeer Asia Pacific
48 Toh Guan Road East
#01-105 Enterprise Hub
Singapore 608586
Phone: +65 6516 9560
Fax: +65 6515 9218

Call toll-free 1-888-VERMEER
1-888-837-6337 (USA only)

Building Industry Alliances to Serve You Better.

Vermeer has forged strong strategic alliances with tree-industry giants that include Sherrill Incorporated and ArborMaster Training. These alliances ensure that top-quality industry support is the standard at Vermeer dealerships. Membership with the NAA and ISA helps Vermeer stay in touch with the customers it serves and the issues they face.



Equipment shown is for illustrative purposes only and may display optional accessories or components. Please contact your local Vermeer dealer for more information about machine specifications. Vermeer Corporation reserves the right to make changes in engineering, design and specifications; add improvements; or discontinue manufacturing at any time without notice or obligation. Vermeer and the Vermeer logo are trademarks of Vermeer Manufacturing Company in the U.S. and / or other countries. CAT is a trademark of Caterpillar, Inc. Cummins is a trademark of Cummins Engine Company, Inc. Sherrill is a trademark of Sherrill Incorporated. ArborMaster Training is a trademark of ArborMaster. © 2009 Vermeer Corporation. All Rights Reserved.