

The leading manufacturer of superior quality equipment for the material handling industry.

R-SERIES RECIPROCATING VERTICAL LIFT

GENERAL INFORMATION

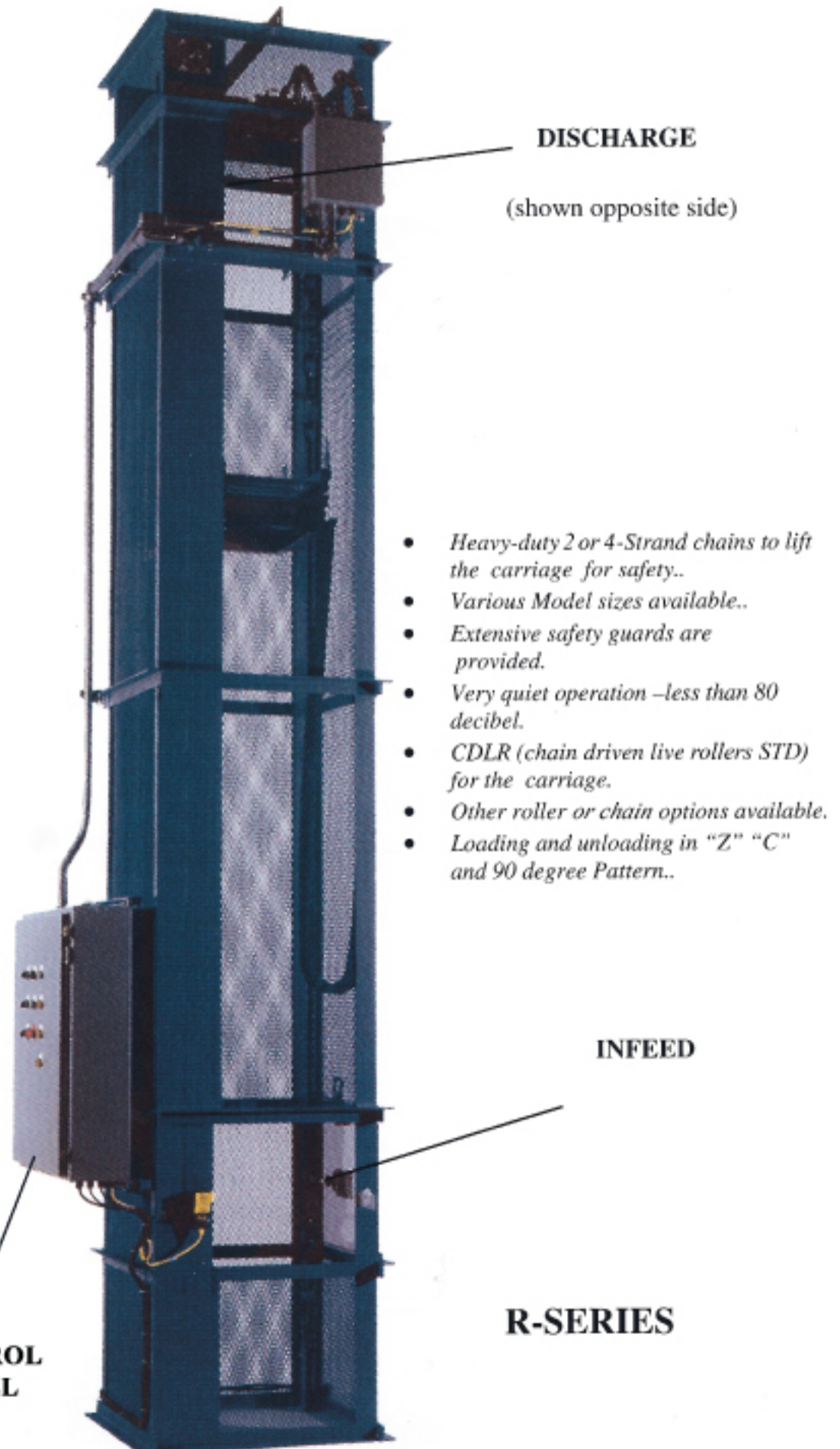
- The R-SERIES is a heavy duty electromechanical reciprocating vertical lift utilizing two (2) or (4) lifting chains to safely lift the Carriage.
- Carriage rollers are standard chain driven live rollers (CDLR). The R-SERIES is capable of multiple level loading and unloading.

CONTROL FEATURES

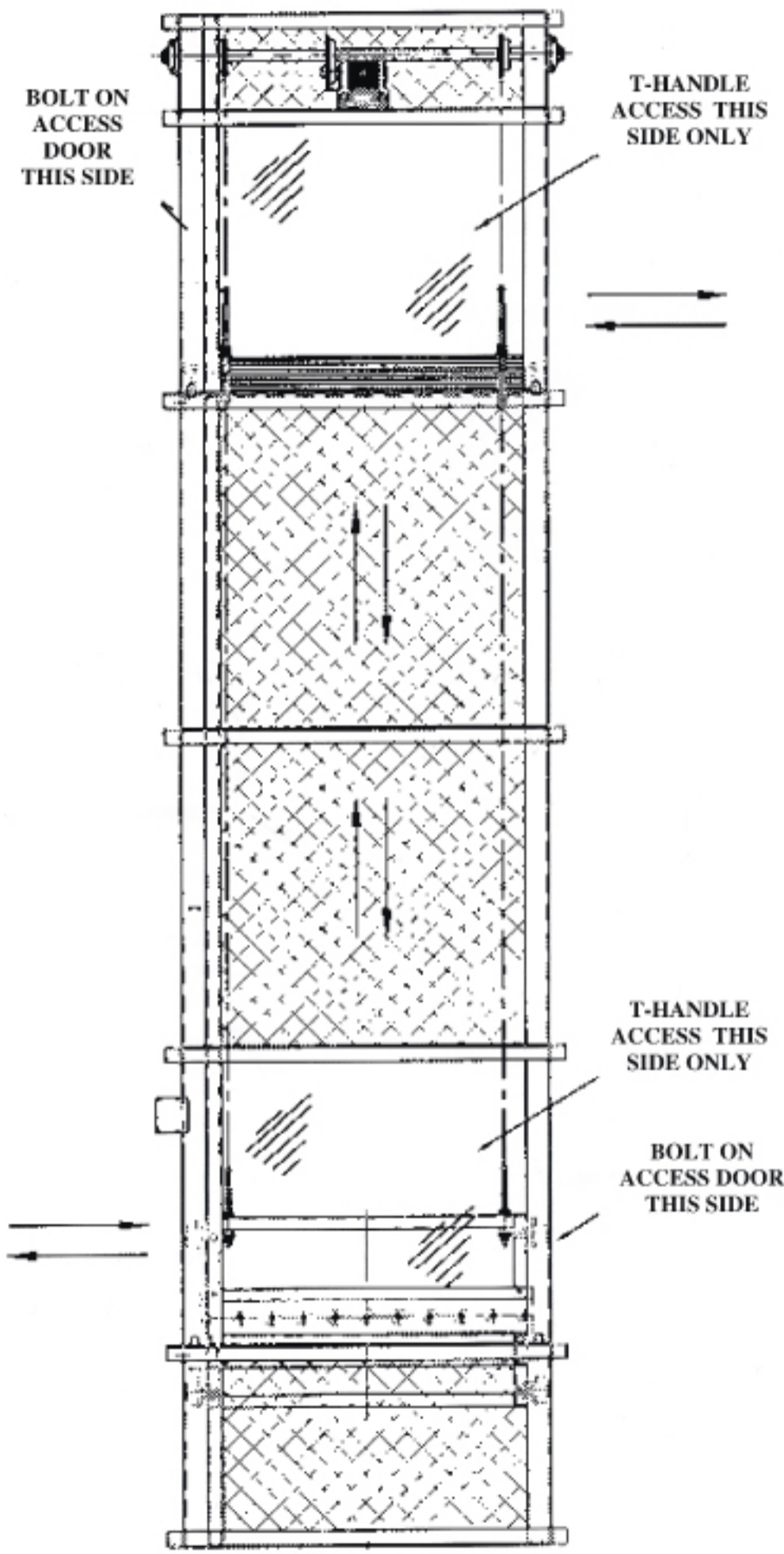
- Control panel includes a 6" touch screen and PLC to control the operation of the Vertical Lift auto and manual functions. This provides superior control of the equipment and if a jam occurs it lists the exact reason for the jam. Custom buttons and other information can be added and collected very easily depending on customer requirements.
- Multi color indicator light on top of control panel. Green for ready, yellow for unit idle (energy management) and red for jam condition.
- All electric, no air required.
- 24VDC controls for safety.

MECHANICAL FEATURES

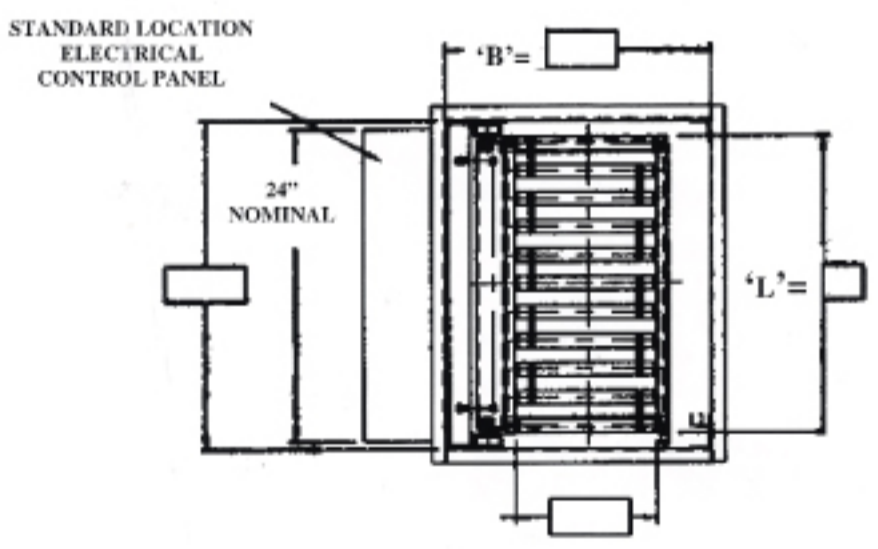
- The R-SERIES is capable of loading and unloading in the "Z" "C" and 90 degree pattern.
- Quiet operation at less than 80 decibels.



R-SERIES RECIPROCATING VERTICAL LIFT



| MODEL | WEIGHT Up TO |
|--------|--------------|
| R-250 | 250 LBS |
| R-500 | 500 LBS |
| R-1000 | 1000 LBS |



The leading manufacturer of superior quality equipment for the material handling industry.

859-781-0450

12020 Chandler Drive, Walton, KY 41094

www.tri-fab.com