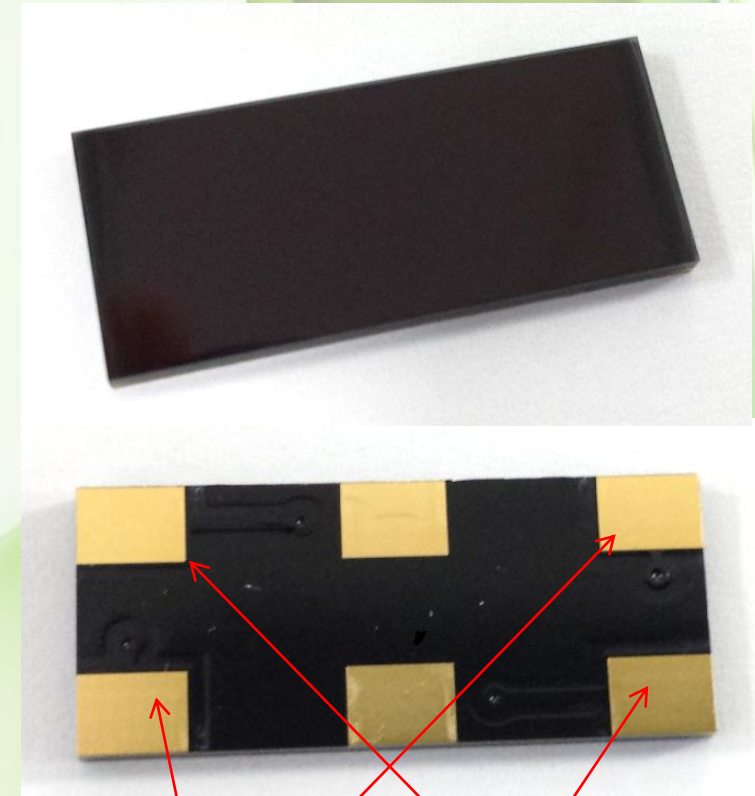


ExCellLight EXL2-1V50 module prototype datasheet

Performance (indication only)	Module
	200 lux white LED spectrum
Size / Thickness	23.8 mm x 10.2 mm / 1.5 mm
Active area	2.15 cm ²
Number of cell(s)	1
Open circuit voltage	1.15V
Short circuit current	49.8 μ A
Operating voltage	1.0V
Operating current	47.6 μ A
Operating power	47.6 μW
Power density (active area)	22.1 μ W.cm ⁻²

* under LED spectrum;



Negative terminals
(not internally connected)

Positive terminals
(internally connected)