

Mounting the solar kit II

The solar kit II is the perfect solution to run your Sierzega Speed Display with solar power.

Mounting of the solar kit can be done without any special knowledge.

Scope of delivery

The solar package contains:

- 1 pc solar module 50 W
- 1 pc solar charger (pre-mounted inside the pole clamps)
- 1 set of cable for battery and solar (**A** + **B**)



- 2 pcs C-bars (**C**)
- 4 pcs clamps (**D**)
- 2 pcs angle brackets (**E**)
- 2 pcs mounting clamps (**F1** or **F2** or **F3**), set on order

Ø 60 mm / 2.3 in

Ø 76 mm / 3 in

40 to 180 mm / 1.6 to 7.1 in



- 8 pcs screws M8x20, snap rings, nuts (**G**)
- 4 pcs carriage bolts M8x30, snap rings, nuts (**H**)



Pole and regulatory speed sign not included in the kit. Sold separately.

Important notes on mounting

1. Substructure

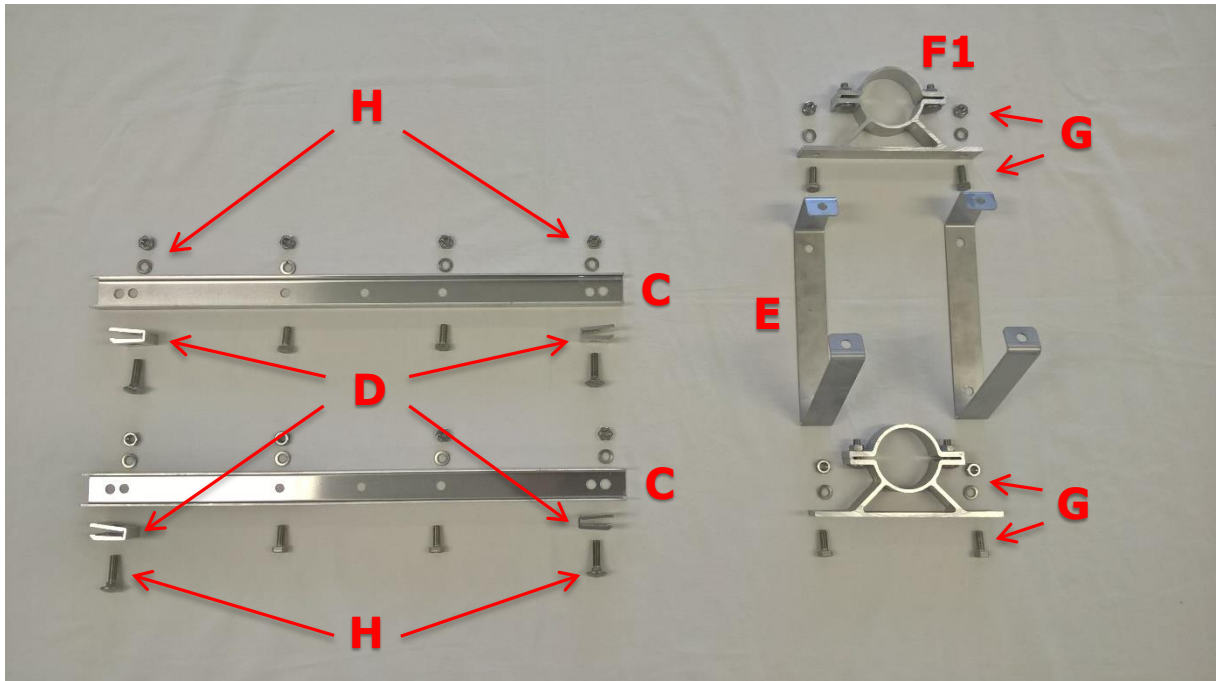


Figure 1

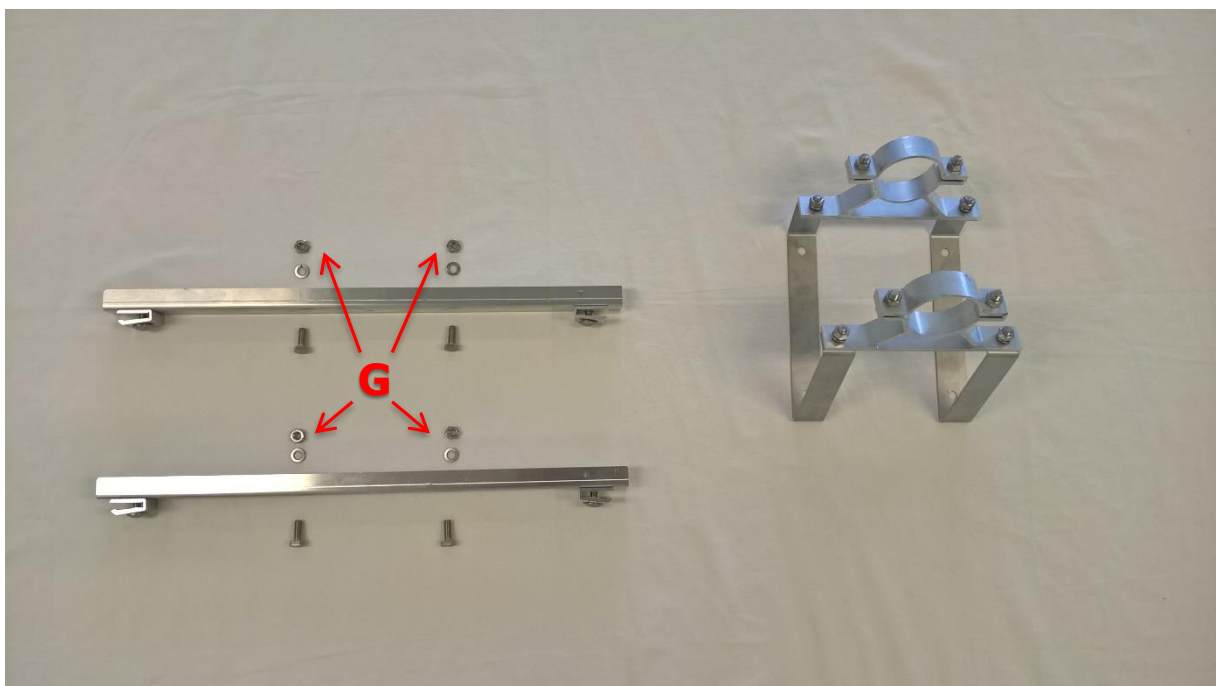


Figure 2

Assemble the substructure as shown in Figure 1 and 2.
Attach the clamps (D) to the C-bars (C) with the carriage bolts (H).

The mounting clamps (F1 or F2 or F3) need to be attached directly on the angle brackets (E).

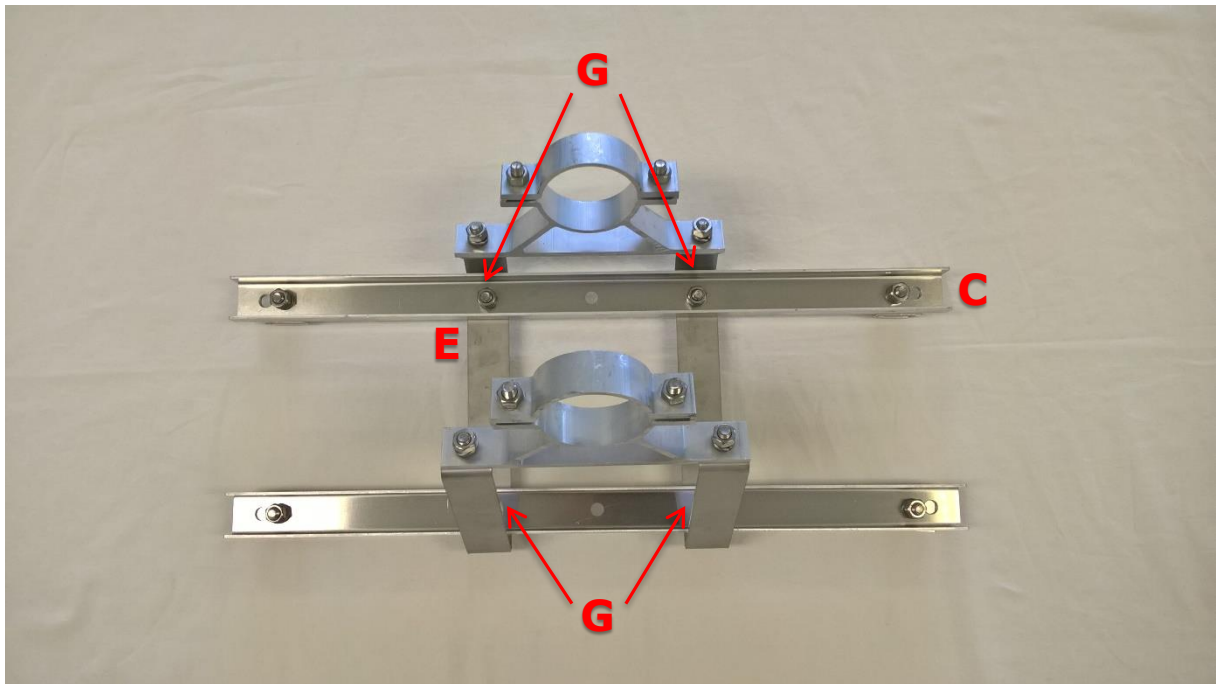


Figure 3

Now attach the angle brackets (E) on the 2 C-bars (C) with the screws (G) as shown in Figure 3.

2. Mounting the solar panel

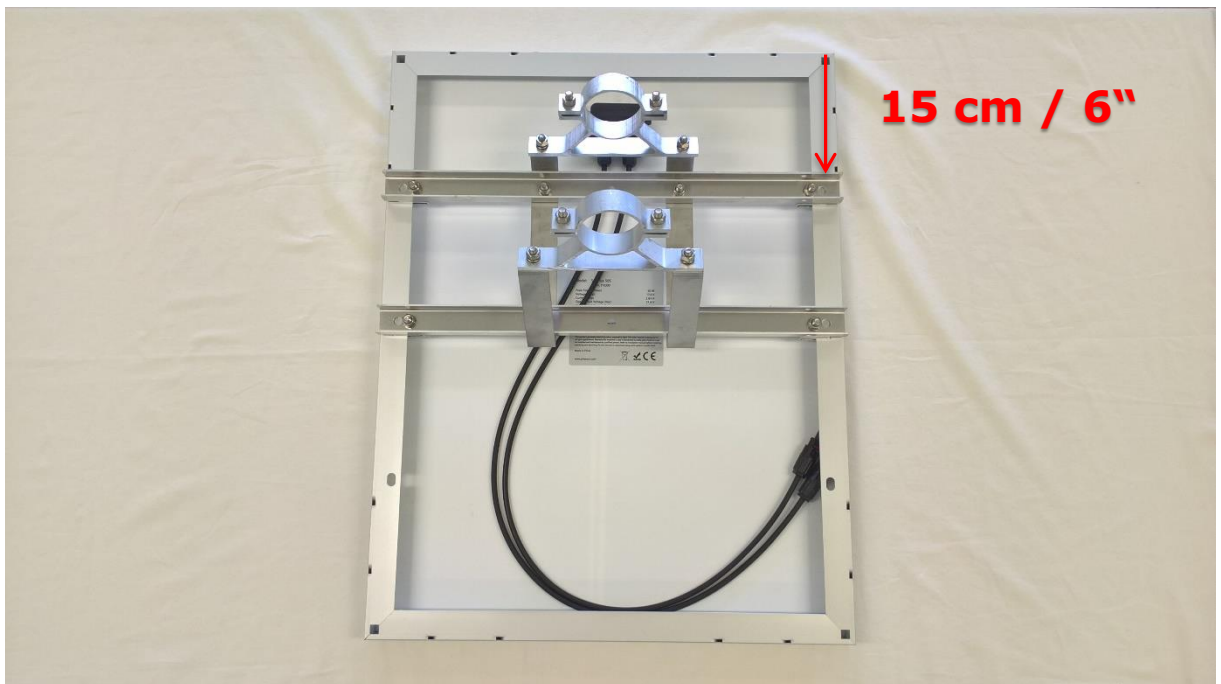


Figure 4

Put the solar module on a plain surface to avoid scratches. Make sure that the black cable outlet is on top. Now put the substructure on the backside of the module so that the clamps snap in the frame. Then tighten the 4 screws (Figure 4).

3. Mounting on a pole

Use the mounting clamps (**F1** or **F2** or **F3**) to mount the substructure and the solar module on the pole.

4. Alignment of the solar module

Cardinal direction

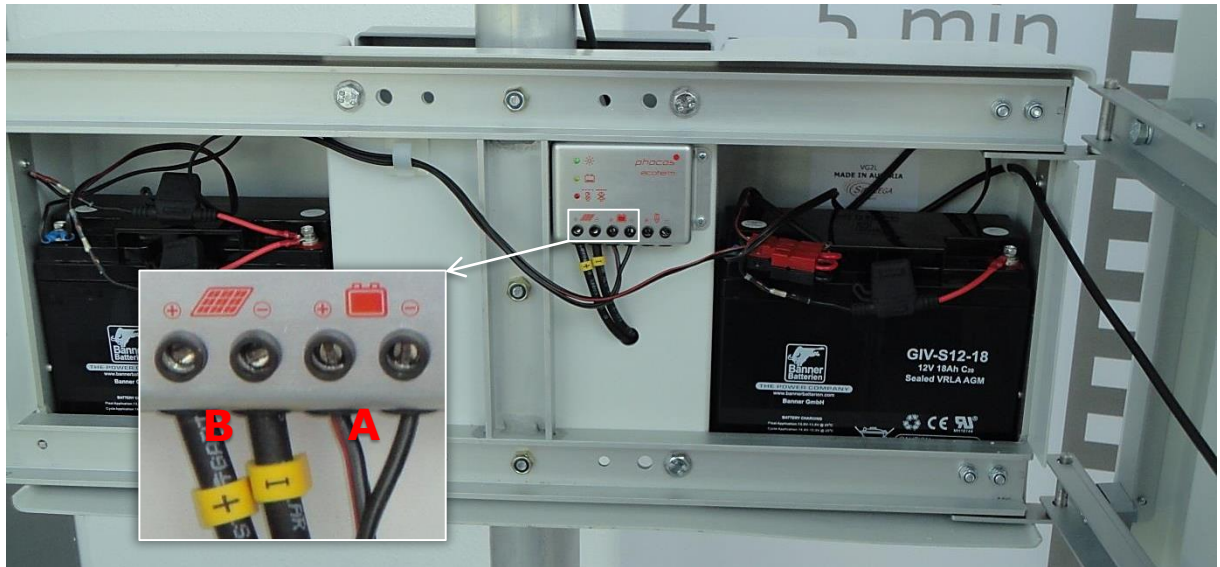
In order to use the solar power most efficiently, we advise to have the solar module pointing towards South.

Shading

Make sure that the solar module is not covered by leaves, limbs, ... as any kind of shading causes a decline on the solar yield.

5. Wiring

Connect the battery cable (**A**) and the connector cable solar (**B**) with the charger (wire ends are attached). The red cable goes together with the + symbol on the charger.



The black plugs of the connector cable solar needs to be connected with the cable from the back of the solar module. Then connect the battery cable with one of the batteries.

In case you are retrofitting the solar to an existing Speed Display, you still need to mount the solar charger inside the pole clamps. Simply drill 2 holes and make sure that the charger is attached well inside the pole clamps.

Important notes

This manual contains instructions on how to mount the solar packet.

- Sierzega does not claim responsibility on dimensioning of the solar module.
- All components of the solar kit II have been designed to be used in combination with Sierzega Speed Displays.
- Sierzega is not liable for improper use of any components of the solar package.
- Mind technical rules and regulations.

In case you have any questions please contact:

Pittsford Traffic and Radar, Pittsford, NY 14534, (585) 267-7401 USA
or
Sierzega Elektronik GmbH, Valentinstraße 11, 4062 Thening, AUSTRIA