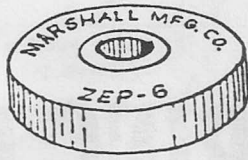
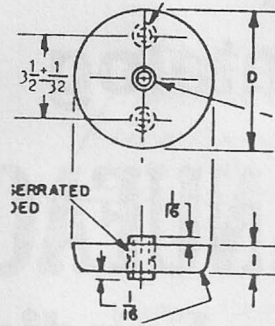


STYLE-B



Style A - Square slab
 Style B - Circular slab
 Style C - Semi-circular slab

STYLE-B

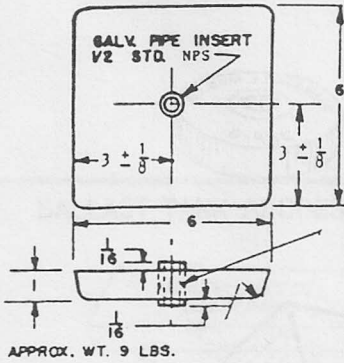


Style B

D = Diameter in inches $\pm 1/8$	Weight (pounds)	Surface area (in ²)
11	24	130
9	16	92
6	7.1	47
5	4.9	36
4	3.19	26
3	1.78	16
2	0.79	9

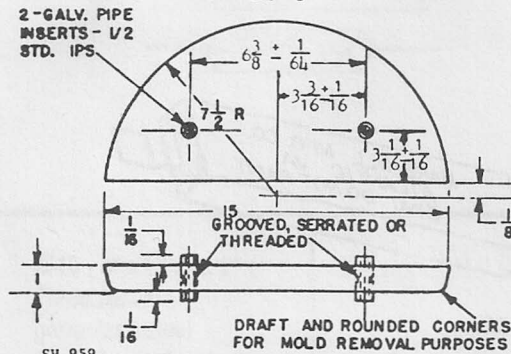
$3/8$ " or $1/2$ " NPS Pipe Bushings Available in for all ZEP Type Zincs

STYLE-A

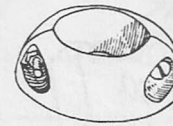


APPROX. WT. 9 LBS.

STYLE-C

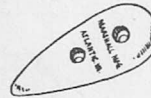


Approximate weight 23 pounds.



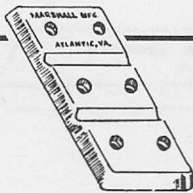
COMMERCIAL TYPE COLLARS

Shaft Size	Weight	Shaft Size	Weight
COM 2 1/2	2 lb/4 oz.	COM 3 1/2	4 lb/12 oz.
COM 3	3 lb/13 oz.	COM 4	5 lb/8 oz.



TEAR DROP ANODES

Size	Length	Width	Weight
TD 3	3 3/8	1 3/4	8 oz.
TD 5	5	2 1/16	1 lb/2 oz.



FP-36
 FLAT PLATE FOR HULL
 $2\frac{3}{4}$ " x $6\frac{1}{8}$ " x $\frac{5}{8}$ "



ZHC-3
 $6\frac{1}{4}$ " x $2\frac{3}{4}$ " x $\frac{3}{4}$ "



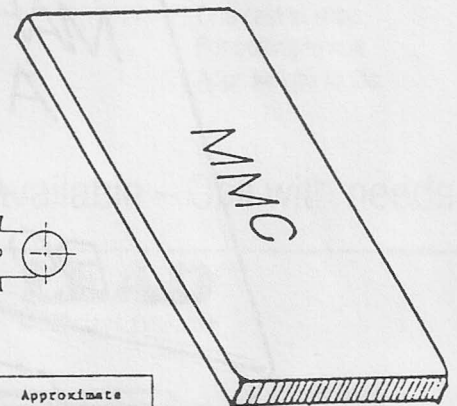
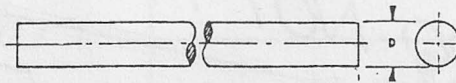
ENGINE ZINCS

No.	Plug IPS	Zinc Dimensions
E1	1/8	1/4 x 2
E2	1/4	5/16 x 1 3/4
E3	3/8	3/8 x 1 3/4
E4	3/8	1/2 x 2
E5	1/2	5/8 x 2
E6	3/4	3/4 x 2
E7	3/4	3/4 x 3 3/8
E8	3/4	3/4 x 3 5/8

Add "P" After No. For Plug & Zinc

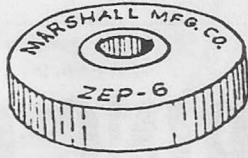
Rolled Zinc Plate & Rod

To Mil. specification
 Available in most sizes
 Call with needs



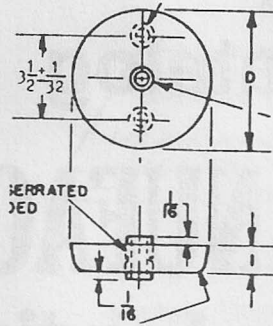
D = Diameter in inches (nominal)	Iron pipe size (inches)	Approximate weight per foot (pounds)
0.405	1/8	0.39
0.540	1/4	0.70
0.675	3/8	1.11
0.840	1/2	1.68
1.050	3/4	2.52
1.315	1	4.12

STYLE-B



Style A - Square slab
 Style B - Circular slab
 Style C - Semi-circular slab

STYLE-B

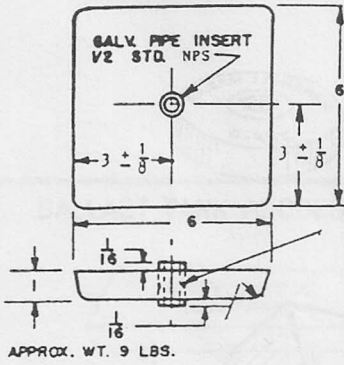


Style B

D = Diameter in inches + 1/8	Weight (pounds)	Surface area (in ²)
11	24	130
9	16	92
6	7.1	47
5	4.9	36
4	3.19	26
3	1.78	16
2	0.79	9

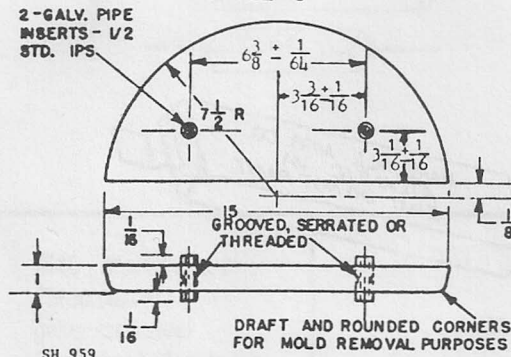
3/8" or 1/2" NPS Pipe Bushings Available in for all ZEP Type Zincs

STYLE-A

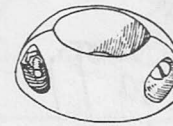


APPROX. WT. 9 LBS.

STYLE-C

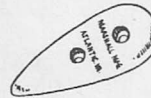


Approximate weight 23 pounds.



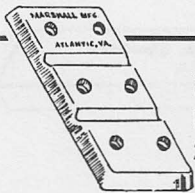
COMMERCIAL TYPE COLLARS

Shaft Size	Weight	Shaft Size	Weight
COM 2 1/2	2 lb./4 oz.	COM 3 1/2	4 lb./12 oz.
COM 3	3 lb./13 oz.	COM 4	5 lb./8 oz.



TEAR DROP ANODES

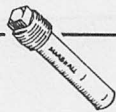
Size	Length	Width	Weight
TD 3	3 3/8	1 3/4	8 oz.
TD 5	5	2 1/16	1 lb./2 oz.



FP-36
 FLAT PLATE FOR HULL
 2 3/4" x 6 1/8" x 5/8"



ZHC-3
 6 1/4" x 2 3/4" x 3/4"



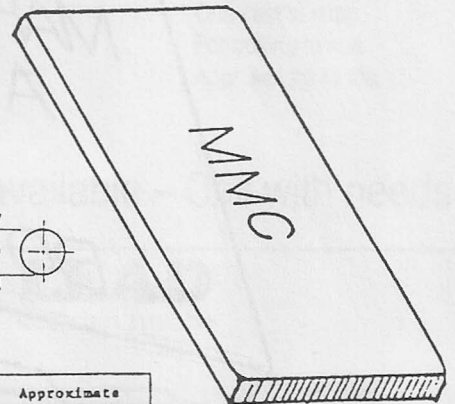
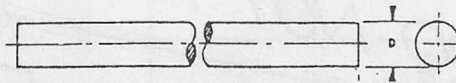
ENGINE ZINCS

No.	Plug IPS	Zinc Dimensions
E1	1/8	1/4 x 2
E2	1/4	5/16 x 1 3/4
E3	3/8	3/8 x 1 3/4
E4	3/8	1/2 x 2
E5	1/2	5/8 x 2
E6	3/4	3/4 x 2
E7	3/4	3/4 x 3 3/8
E8	3/4	3/4 x 3 5/8

Add "P" After No. For Plug & Zinc

Rolled Zinc Plate & Rod

To Mil. specification
 Available in most sizes
 Call with needs



D = Diameter in inches (nominal)	Iron pipe size (inches)	Approximate weight per foot (pounds)
0.405	1/8	0.39
0.540	1/4	0.70
0.675	3/8	1.11
0.840	1/2	1.68
1.050	3/4	2.52
1.315	1	4.12