



GLOBOND

SOLID ALUMINIUM CLADDING INTRODUCTION:

GLOBOND Fluorocarbon aluminum panel is made from aluminum alloy supplied by world famous big enterprises. The surface is coated with fluorocarbon PVDF paint of PPG from USA .DGL Camel from Australia or Akzonobel from Netherlands .Fluorocarbon aluminum panel is composed of plate, reinforcement bars and racks etc. Custom thickness: 2.0mm, 2.5mm, 3.0mm Material and structure of Aluminum curtain wall panel

The aluminum curtain wall panel is made of high intensity aluminum alloy plates, the custom thickness is 1.5mm, 2.0mm, 2.5mm , 3.0mm,4.0mm or above, model 3003 and phase H24 or high class aluminum , the custom max dimension is 1220x2440 (mm).

Standard thickness: 2.50mm or 3.00mm for exterior.

Standard width:1000mm to 1300mm.

Standard length:1000mm to 4000mm.

Alloy temper: 3003H24.

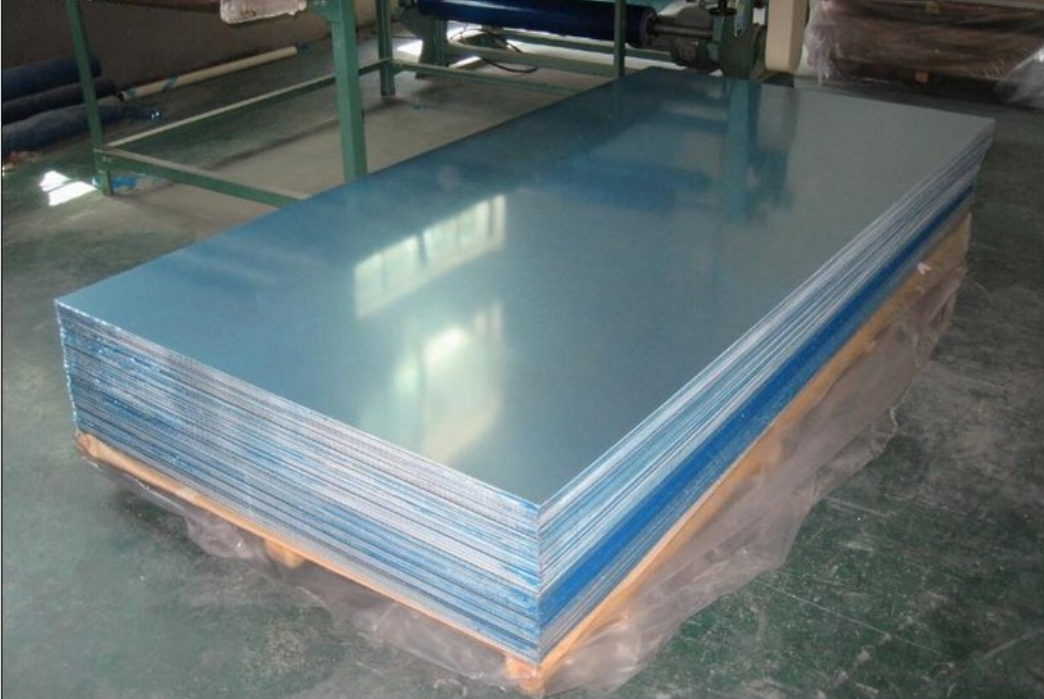
Painting: Roller coating. PVDF. Spray painting or Powder coating.

It is composed of plate, reinforcement bars and corner racks. The corner racks can be shaped from plate or punched or riveted at the edge. The reinforcement bars are soldered on back of plate to reinforce intensity and hardness of whole pane, this structure gives the panel better flatness and shock resistance as well as the long lifetime. If you want it to be sound and thermal isolation, we can add sound and thermal isolating material inside the panel.

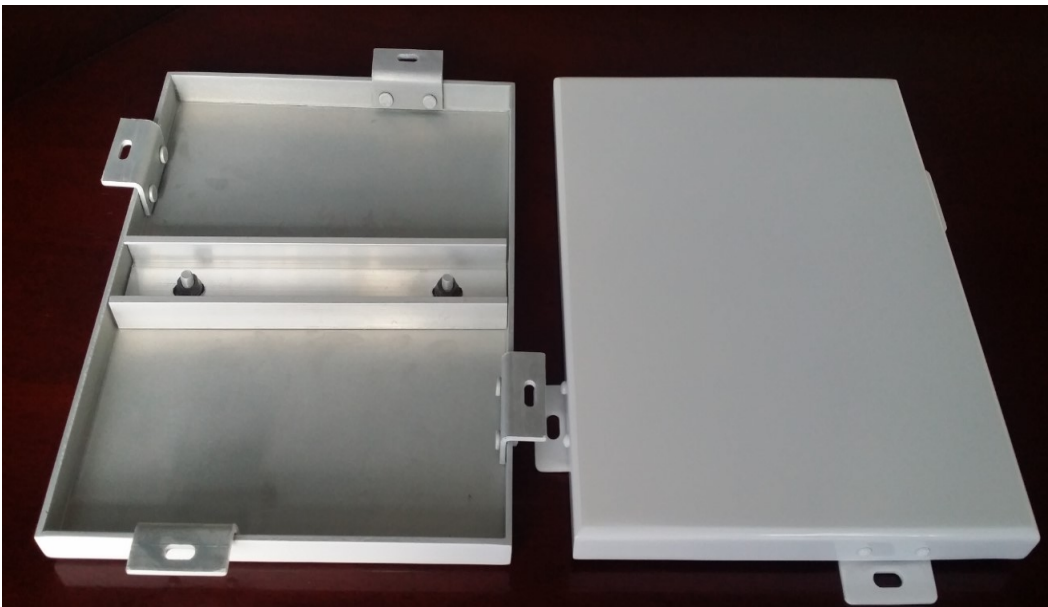
SOLID ALUMINIUM CLADDING

SHAPES:

Flat sheets:



Flat panels:



SOLID ALUMINIUM CLADDING

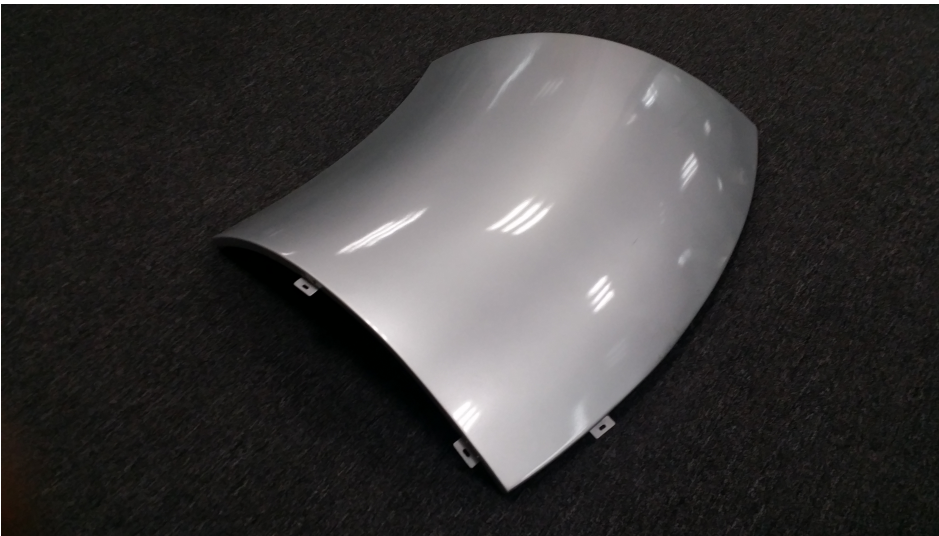


GLOBOND

Arc panels:



Curved & Nosing panels:



SOLID ALUMINIUM CLADDING



GLOBOND



COLORS:

Common solid and metallic colors:



High gloss colors:

SOLID ALUMINIUM CLADDING



GLOBOND



Stone and wooden colors:



Chameleon or spectra colors:

SOLID ALUMINIUM CLADDING



GLOBOND



ADVANTAGES:

- 1、 The hardness is up to Mohs' scale 6.0, higher than steel but lower than diamond.
- 2、 Scratch resistant and easy to clean, far better in cleaning than fluorocarbon coating and powder injection.
- 3、 Discoloration proof and environment resistant, it is not discolored under sunshine.
- 4、 Alkalinity or acidity resistant and isolation (A grade fireproof level)
- 5、 Easy for installation
- 6、 Lifetime up to 50 years with unchanged performance
- 7、 Available for artistical decoration without changing performance.
- 8、 Corrosion resistant, salty fog test over 2000 hours.
- 9、 Strong chemical corrosion resistant.
- 10、 It can inhibit bacteria from growing, easy to clean
- 11、 The material is produced from mineral substance without any harmful substance;

INSTALLATION PROCEDURES

Lining and measuring—positioning—inspecting materials—pre-installation—main body installation—Enamel aluminum panel installation and adjustment—clean

Installation steps:

- 1, Measurements

SOLID ALUMINIUM CLADDING



GLOBOND

Line and measure the installation place with precision instruments according to construction or installation drawing sheet. Position the base line of installing enamel aluminum panels, double check the data and draw a final installation sheet.

2, Construct main body

The design of main body is adjustable, the steel supports and main body must be connected with mechanical fixings stably and correctly. The measurement deviation of pre-installed parts should not be more than 10mm, the deviation of pre-installed position and designed position should not be more than 20mm. Double check and measure the flatness, verticality, connection and soldering after main body is installed.

3, Transport the enamel aluminum composite panels to the installation spot.

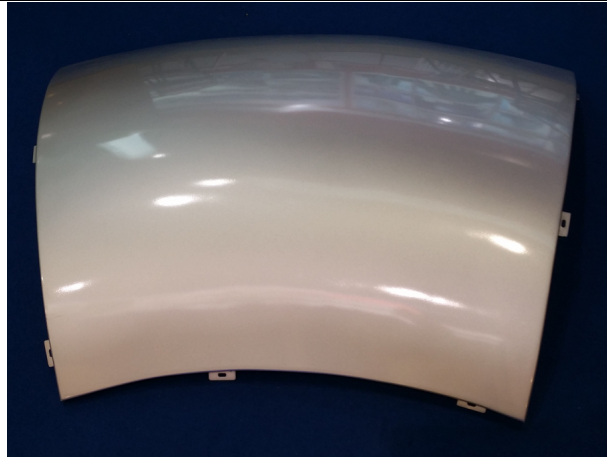
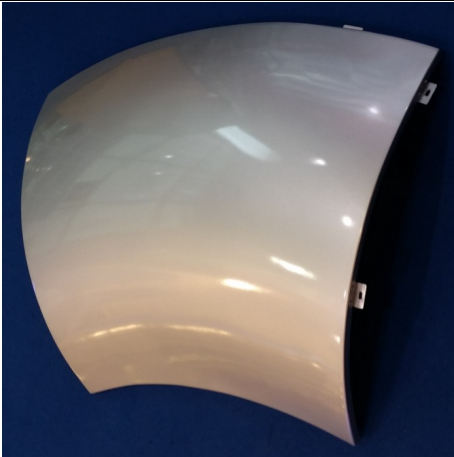
As the panels have different shapes according the construction requirements, it is required to sort the panels and put them independently, the height of piled panels should not be more than 2m.

4, Install enamel aluminum panels

Install panels according to drawing and construction data, install the right panels at the right place, do not cut and process the panels as they have been processed correctly according to drawing and measurements, and install the panels according to colors and patterns required by the construction design.

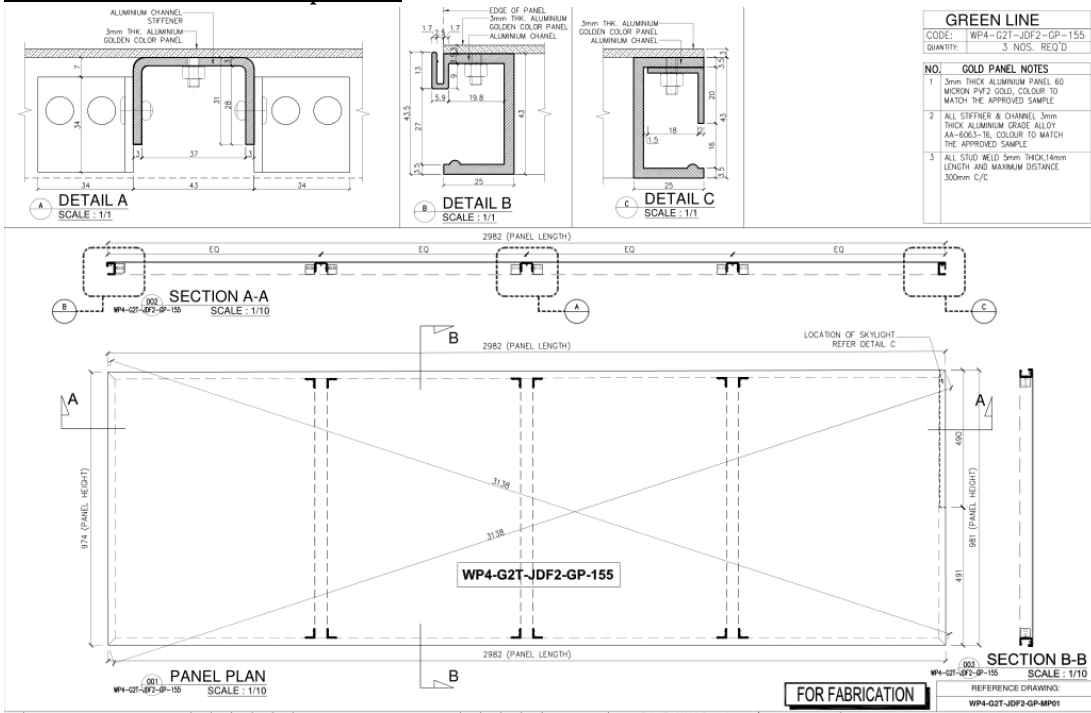


GLOBOND



FABRICATION DRAWING:

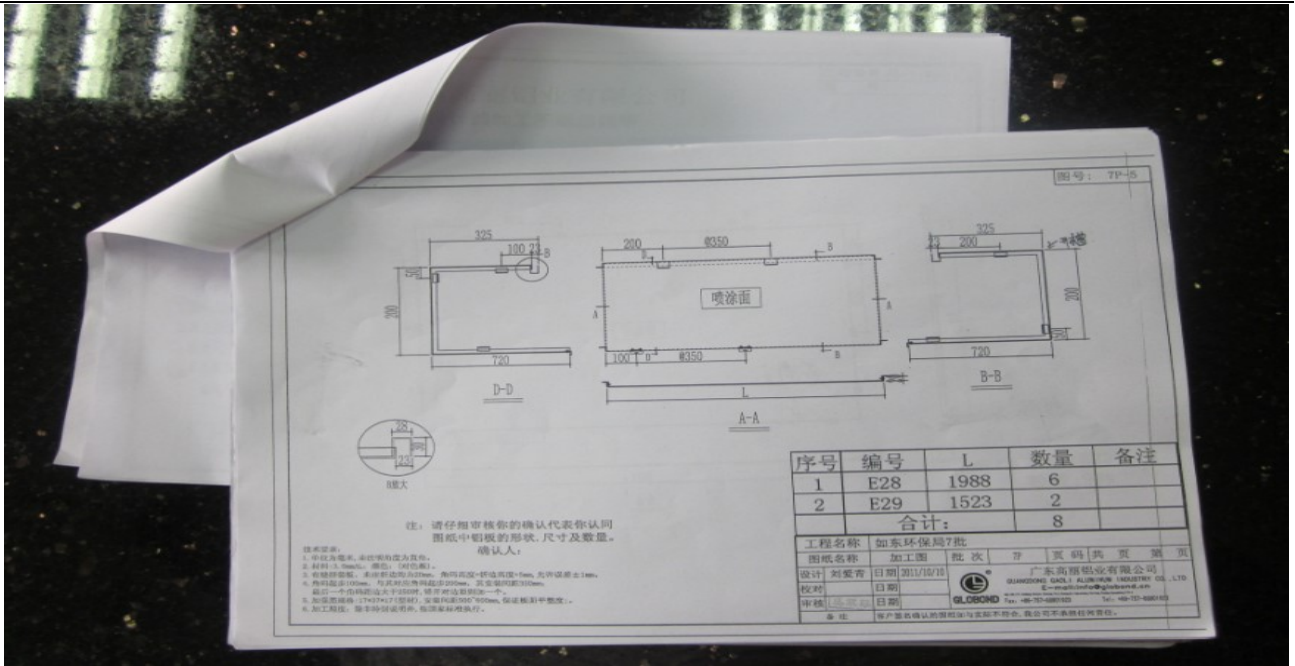
a. Flat solid aluminium panels.



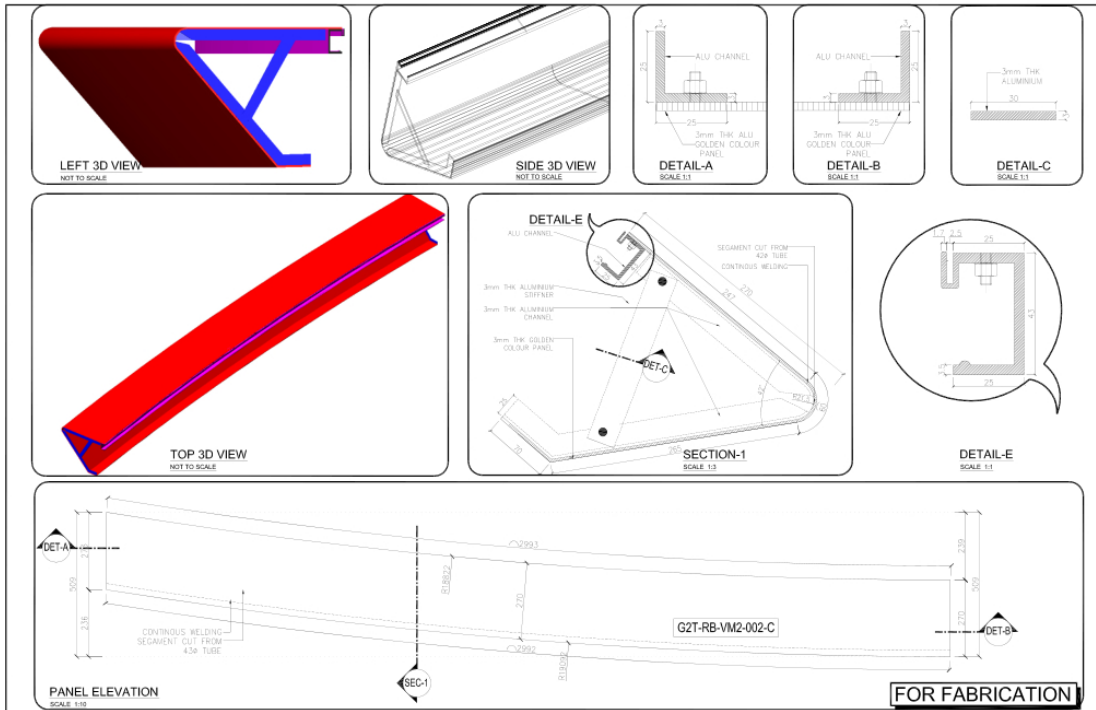
SOLID ALUMINIUM CLADDING



GLOBOND



b.nosing solid aluminium panels.

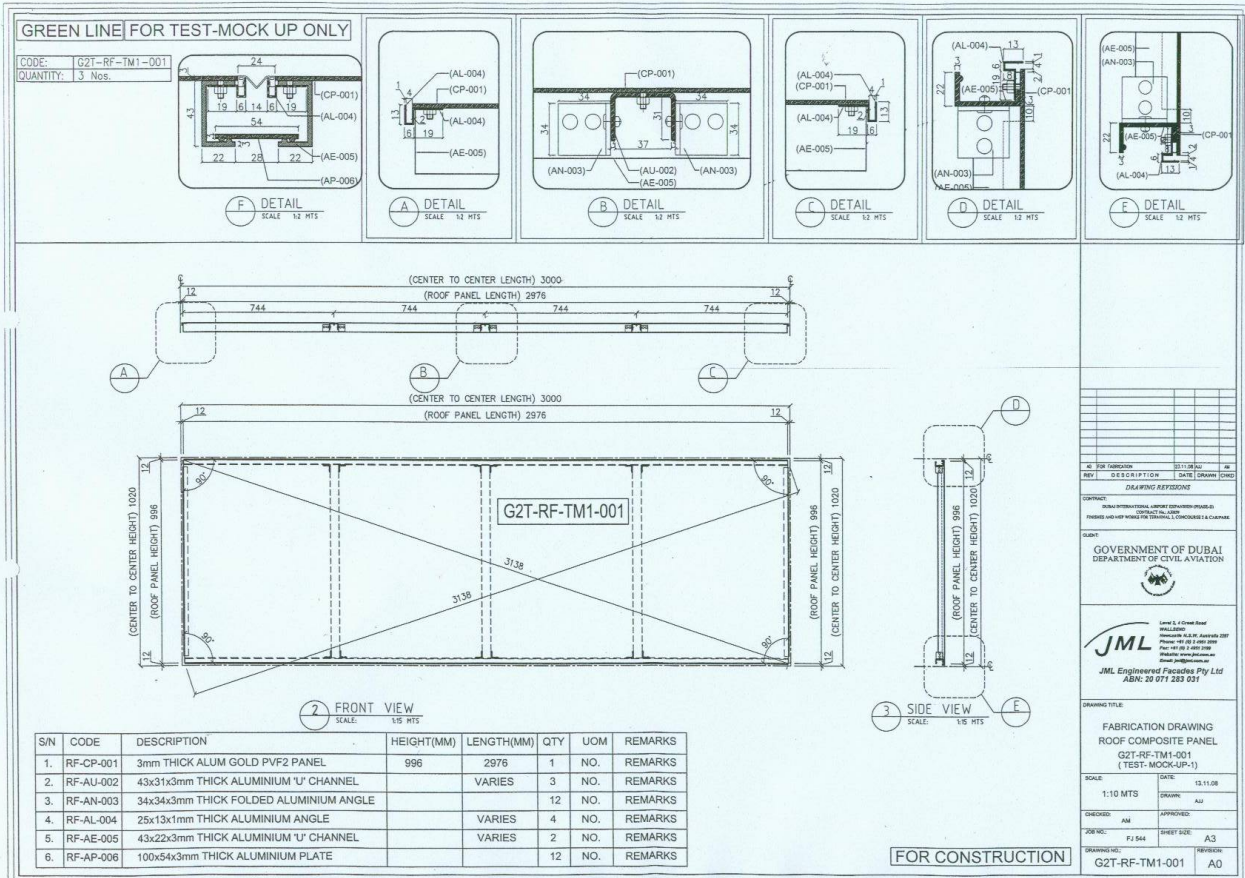


c.Installation .

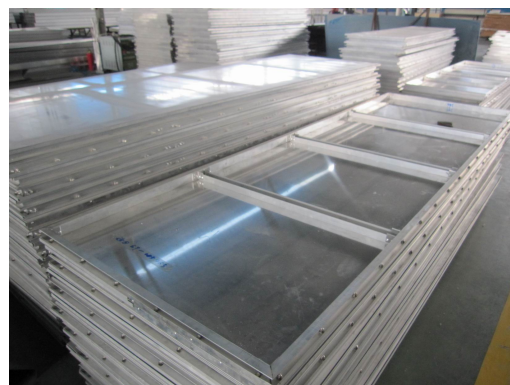
SOLID ALUMINIUM CLADDING



GLOBOND



SEMI FINISHED PRODUCTS:

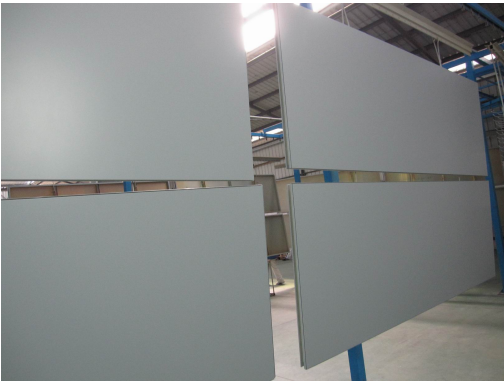


SOLID ALUMINIUM CLADDING



GLOBOND

PRIMER PAINTING:



FACE PAINTING:



INSTALLATION:



PACKING:

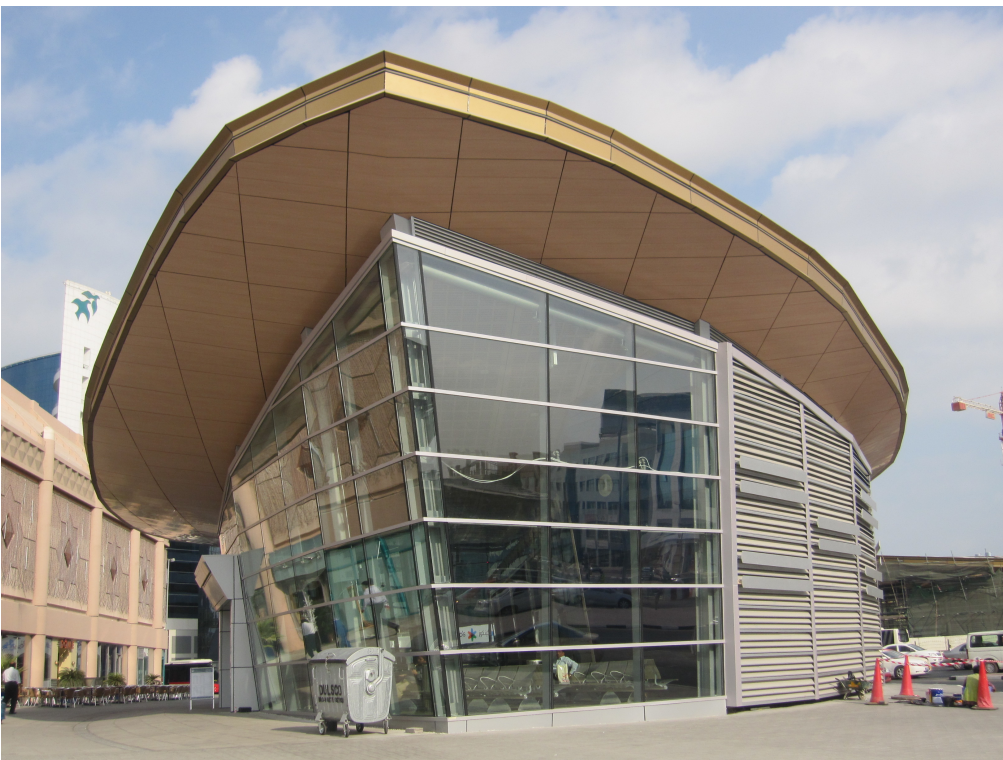


SOLID ALUMINIUM CLADDING



GLOBOND

Project: Dubai metro Green line and red line.



SOLID ALUMINIUM CLADDING