

# Custom Steam Solutions Inc.

## DHW Solutions



YOUR STEAM SYSTEM PARTNER



Custom Steam Solutions Inc

Your Steam System Integrators



# DHW Solutions



## Energy Efficient DHW Solutions

Custom Steam Solutions Inc have combined proven mechanical solutions to provide heat on demand non storage designs and combined them with controllers that can control and trend to give the user best in class control and trouble shooting diagnostics .

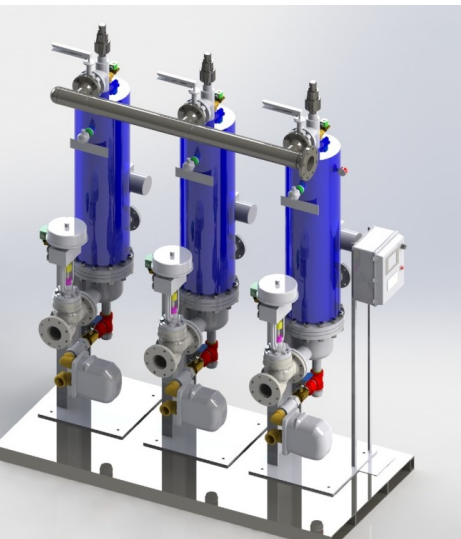
## STEAM AND HOT WATER DESIGNS

CSSI can perform a load study before undertaking any DHW project upgrades or extensions. This guarantees DHW heaters are not oversized leading to poor control and risk of scaling.

CSSI can offer pneumatic or electric controls, pressure control and options for BTU and legionella monitoring together with closed loop active condensate drainage using pump trap technology.

It is our goal to have the unit operating at the lowest pressure possible and we would always recommend an upstream PRV station where possible.

The design offers steam in the bundle and water in the shell ideally suited for the challenging water conditions found in North America.



## Four Stage Approach to Design and Optimized Solution

### WALK AROUND

The CSSI team will visit the customers site to identify existing equipment and establish the optimal solution. We will discuss the solution with all members of the customers team to offer a solution that saves space, reduced energy and provides reliable production of hot water with redundancy.

### BENCHMARKING & IDENTIFICATION

This level involves recommend usage of flow-meters at certain locations to quantify the energy flow. we also install data logging devices to map the steam and hot water flows and trend important process parameters of temperature and pressure, blow down venting etc. Supply and Install custom Energy Panels for your system. This includes a complete look at the Thermal System:

- Drawing the system P&ID
- Condensate Return
- Insulation Losses
- Sizing and selection
- DHW loop design
- Venting and dumping losses
- Controls options
- Networking

### SYSTEM EFFICIENCY

CSSI will design the DHW system to match the loads of the building. The hot water supply will be controlled within +/- 2 Deg F under steady load conditions. The CSSI DHW+ system offers the Eurotherm Nanodac DHW + controller which can control up to three loops and monitor 30 channels such as DHW temperature, low flow and scaling of the unit

### PROJECT EXECUTION

CSSI will supply, install and commission the DHW solution. A dedicated project management will ensure there is minimal disruption whilst meeting project goal such as budget, health and safety and limited downtime



Custom Steam Solutions Inc

Your Steam System Integrators



# Unit Specifications

## Max Capacities

CSSI DHW+ is available for instantaneous flows up to 180 USGPM. Single or double wall bundles in Stainless steel 316 or Copper. Max temperature 200 Deg F. Max pressure 150 psig. CRN and CSA standard. Design to ASME VIII Div 1.

## Controls

Electric or Pneumatic controls. Temperature and Pressure Control available. Btu and flow measurement with Legionella safety module available. Color display with trending functions.

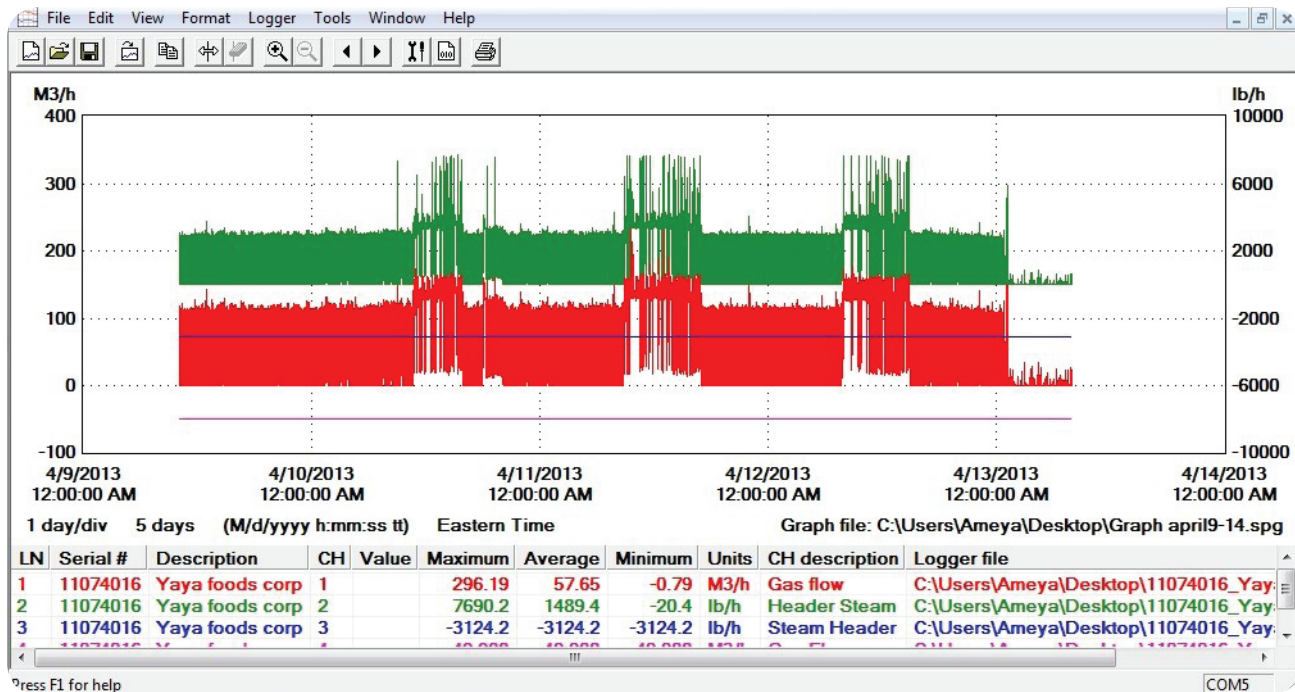
## Condensate Drainage

We can offer condensate drainage options to suit the customer requirements. Gravity drainage using traditional steam traps and options of electric or closed loop pump trap technology.

## Packaged Solutions

The CSSI DHW+ comes fully packaged and pre-commissioned ready for install. The control panel is UL approved, all sensors and valves are wired and the skid is hydro tested before despatch with the relevant U1A paperwork.

# Optimal Controlability



Book your free site inspection today

Call Custom Steam Solutions 647 202 8351