

Caisht sonney dhyt!

Easter greetings from Rushen Heritage Trust! On 30th April, we begin our 2016 programme with the launch of Isle of Man Walks - the world's first outdoor interactive heritage walk using iBeacon technology. The event will be closely followed by our second Tourism exhibition and our first Story of the Land exhibition, celebrating the book written by Captain of the Parish Stanley Clucas. We're also excited to reveal our plans for an Internment and Wagner Festival in association with the Erin Arts Centre during August!

Celebrating Tourism in Rushen



Imagine you're a visitor to the Isle of Man and you've chosen to stay in the beautiful area of Rushen for your holiday. What are the kinds of entertainment and activities available for you to do?



From bustling cafes and ice cream parlors to golf courses and tennis courts. Jam packed beaches, elegant dance halls and the coaches that would ferry tourists across the south, we have found a stunning collection of photographs from across the decades to share with you.



Come along and reminisce about the glory days of southern tourism, share your own stories and your memories of summer days gone by while children discover the outdoor games their grandparents used to play and see tourism in the south in a way that you've never seen before!

Southern Tourism Across the Decades Exhibition

Saturday 28th May until Wednesday 15th June 2016

St Catherine's Church Hall in Port Erin

Open daily from 10am until 4pm

Free Entry

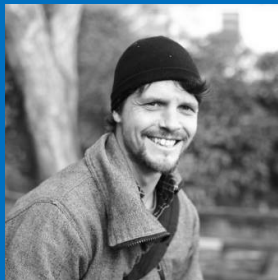


Look Inside...

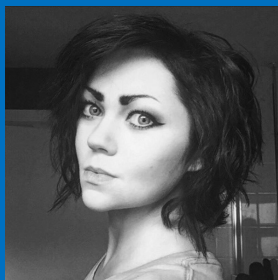
- Meet our new volunteers
- Find out how to download the Isle of Man Walks App
- Read the next preview of *A Year on Ballachurry Farm*
- Find out why we're getting excited about Wagner in Port Erin this August
- What's in a place-name?

Welcome to RHT!

We're always looking for new members and this month we welcome two new volunteers to Rushen Heritage Trust.



Following his studies in Construction & the Built Environment at the Isle of Man College, **Sam Styles** studied Architectural Conservation in the UK and worked in Derby as an Architectural Assistant and at the Historic Royal Palaces in London as a CAD Manager. He spent some time in Australia, New Zealand and Asia before returning to the UK and the island where he is currently working in design, drafting and photography, assisting with the 3rd Peel Scout Group and Rushen Heritage Trust.



Kerry Hudson is a business degree student at the Isle of Man College, having returned to the island after studying Psychology at the University of Bath. She currently works with various non-profit organisations in marketing and event management. A keen distance runner and photo blogger, Kerry will mainly be assisting with developing, testing and promoting our Isle of Man Walks app.

Get Involved!

Contact Laura on 321847 or email rushenht@gmail.com to find out how you can join in.

Are you ready to join in our interactive heritage walk?

We've been talking about it for months; the world's first outdoor walk using iBeacon technology that you can interact with using your mobile phone.

Volunteers in our Story of the Land HAT have spent the last few months researching historical documents, stories and legends, Manx language and local wildlife to build an extraordinary library of films, audio and photographs for the local community and visitors to the island to share.

Staffan Overgaard, who coordinates the team, came up with the app idea on a visit to the Hague where he saw similar technology. "The technology is innovative," says Staffan, "but the important part is the content you can discover as you walk. You can even improve your Manx!"



The Chasms Café features as a waypoint on the app where you can learn about its history.



"iBeacons are relatively new technology," says Zak Hoosen, Director of Fuzzelagic in Douglas, the company that has developed the app. "We've never seen them used for an outdoor heritage walk before and we were excited with the challenge to create something completely new and unique for the Isle of Man."

An iBeacon runs on two AA batteries and they will be mounted at various points along the *Raad ny Follen* from Port St Mary to the Sound. Once you have downloaded the free app to your phone and start to walk along the path, each iBeacon transmits signals that the app picks up - even if you have no signal!

"The app has an offline mode," says Zak, "which means you can access the app without using your mobile data and you can download the app at home using your own Wi-Fi."

You can then use the app to listen to audio about the landscape you are walking through, see photographs, watch films and learn about Manx language at each waypoint.

Find out about the French Sailor's Grave and what happened when a Boeing B-17 crashed into a Rushen hillside, discover the mystical Druid Circle and hear many more stories and legends that you may never have heard before.

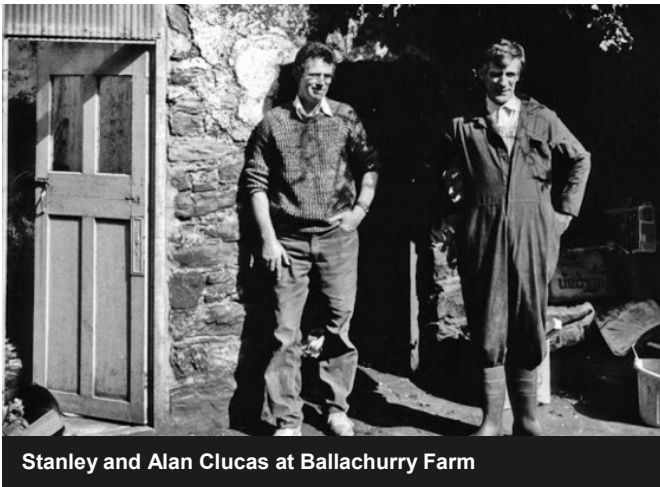
Join us at our launch event on Saturday 30th April from 10am at the Sound Café where the team will be giving demonstrations.

A Year on Ballachurry Farm 1943-1944

When Captain of the Parish Stanley Clucas sat down to record his childhood memories and collection of stories about the farm he grew up on, he had no idea that it would one day turn into a published book and an exhibition.

As a volunteer in our Story of the Land HAT, Stanley shared his stories and the group immediately felt that they should be enjoyed by the wider community and so developed the idea of a book and an exhibition. "I've really enjoyed sharing my memories and writing the book," says Stanley. "I hope that they will be enjoyed by many generations to come and the way life used to be will not be forgotten."

"A Year on Ballachurry Farm 1943-44" launches on Saturday 9th July at Port St Mary Town Hall where the free exhibition is open daily between 10am and 4pm until Tuesday 26th July.



Stanley and Alan Clucas at Ballachurry Farm

Could you help volunteer this summer?

If you have a couple of hours or a free afternoon to spare, we are looking for volunteers to help staff our exhibitions!

Come along and meet new people, find out more about your local heritage with a special tour of the exhibition you will be helping out on and join us at our special launch parties, where we thank everyone who has shared their time to bring these extraordinary exhibitions to life.

We would love to hear from you. Please call Laura on 321847 or email rushenht@gmail.com

Take a moment to read a special preview of "A Year on Ballachurry Farm, 1943-44".



We all look on May as the best month of the year; the hedges are ablaze with colour, the yellow gorse in contrast with the white of the hawthorn and the myriad of smaller wildflowers compete with the late primroses, bluebells and wild grasses.

The worked fields have also erupted with well-ordered life; the straight rows of corn and potatoes are almost leaping through the ground following the April showers and in the warmth of early May sunshine.

The Boss takes particular pleasure in this time of year as the farm seems to burst at the seams with new arrivals. Calves and lambs appear as if from nowhere, goslings, ducklings, chickens and even Blossom, the oldest of our mares, is heavy with foal.

With the early spring, most of the stock wintered on the yard have been put to grass and now it is the turn of the milk cows! Once inside the gate they are kicking their legs in the air and racing around the field like yearlings and it's a wonderful sight to behold. They soon return to their serene selves and settle to fill their bellies with the lush spring grass.

The advert in the Farmers Guardian has fascinated the Boss. *"This is the machine that will take the drudgery out of your life. One man will milk with the new Gascoigne Milking Machine in half the time that four can milk by hand!"*

The parts arrive and within two days it is installed. A neighbour, who already has the machine, gives us far more advice than is needed and has to be ushered out of the way - although his last piece of advice proves to be true...

"The younger cows will take to machine milking almost immediately but the old dears just don't like change."

...so, what's new!

Did you know that possibly the only WW2 married internee camp in the whole world was in Rushen?

It's true. The two beautiful towns of Port Erin and Port St Mary became a temporary home to many women and children internees in May 1940 and in May 1941, possibly the world's only camp for married internees was established.



'This Camp shall be confined to the houses on the Promenade at Port St. Mary'

Last year, our WW2 Internment HAT held a successful exhibition about the arrival of 3,000 women and children arriving in Port Erin on the 29th May 1940 and the impact this had on the local community. This year, exhibition is extended to look at the creation of the married camp and the stories of the couples and families who lived there.



Baroness Ruth Hennig, the younger sister of Eveline Munzer pictured here, will open our next exhibition.

Married couple Kurt and Frieda Munzer (pictured left) were both interned on the Island in 1940. Kurt was interned in Onchan while Frieda was in Rushen. Frieda, along with a number of other female internees, was due to give birth not long after her arrival and Eveline (Evi) Munzer was born in the Jane Crookall Maternity Ward in Douglas.

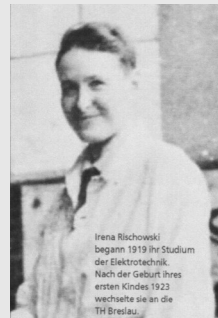
The exhibition will showcase a beautiful collection of photographs alongside stories and memories shared by members of the local community who still remember the days when they shared their towns with the internees.

WW2 Internment Exhibition: "Friend or Foe? 1941-1942"

Thursday 28th July - Wednesday 24th August
St Catherine's Church Hall in Port Erin
Open daily from 10am until 4pm
Free Entry

Friend or Foe? 1940 - 1941

The WW2 Internment HAT are proud to announce the launch of their second book, celebrating their first exhibition. Here is a special preview, about Ira Rischowski, just one of the many incredible stories that the group have discovered in their extensive research.



Irena Rischowski
begann 1919 ihr Studium
der Elektrotechnik.
Nach der Geburt ihres
ersten Kindes 1923
wechselte sie an die
TH Breslau.

Ira Rischowski was born in Germany in 1899 to non-practising Jewish parents. She was baptized when she was five years old and received a Protestant upbringing. Her father owned a shipyard and while visiting, aged five and observing the compressed-air riveting process, she resolved to become an engineer.

In 1919 she began her University course at Darmstadt, where she was the only woman, of three thousand students, studying engineering. While at Darmstadt, she met and married her husband. In 1928, her husband changed his job and she returned to live with her parents with her daughter. Her mother looked after the child while Ira resumed her studies in Breslau, where she received a Dipl. Ing. VDI - the German equivalent of the BSc. Ira was not political, but she became a member of the anti-Nazi group, 'Org.' and in 1935, after a short imprisonment, she and her husband emigrated to England, leaving their second daughter with Ira's mother. At her Tribunal, Ira was deemed to be 'class C', but, as she was an engineer, a firearms restriction was added and because of this she was later interned. Arriving on the Island, she was billeted at the Golf Links Hotel on the Promenade. She was allocated washing up duties and from her accompanying singing grew the 'Golf Links Choir'. She became one of the internees' senior representatives, who met regularly with the Commandant to try to resolve any issues raised by the women. She later became involved with the Service Exchange.



Ira (second from the right) at the first conference of the Society of Women Engineers.

After the war, Ira worked as a draughtswoman and planning engineer, first in Sussex and later in London. She joined the Society of Women Engineers, where she lectured on such topics as technical services required to support engineers and scientists.

Come and meet the team at their book launch, 1pm on Sunday 29th May at St Catherine's Church Hall, Port Erin.

Revealing plans for our Wagner and Internment Festival at the EAC!

Led by our WW2 Internment HAT, the festival will celebrate the life of Richard Wagner's "rebellious" granddaughter Friedelind, who was interned in Port Erin in 1940. She was the only member of the Wagner family to be strongly anti-Nazi and her mother was a close friend of Hitler.

Friedelind Wagner despised her mother's close liaison with Adolf Hitler and was the only member of the Wagner clan who fled Germany in protest. Although she was warned that the Nazis would 'exterminate' her if she continued her open opposition, she travelled to London and published articles pillorying the Nazi élite. Even so, in the eyes of the authorities, she was suspicious and they promptly interned her in Port Erin. Only with the help of the world-famous conductor Arturo Toscanini was she able to gain an exit visa to New York, where she broadcast, lectured and published against the Nazis, wrote an autobiography, and became friends with many other emigrants including singers who had themselves abandoned Bayreuth.



Eva Rieger (pictured left) published her acclaimed book about Friedelind Wagner in 2012 and is visiting Port Erin this summer as part of our festival.



Eva is visiting Port Erin with her brother Dr Chris Wagner, who was six years old when he was interned in Port Erin and who hopes to meet up with the local boys he played with on the beach to swap memories.

Were you one of those boys? Please contact Laura to find out how you can meet Chris and Eva on 321847.

Wagner and Internment Festival Programme 2016 at the Erin Arts Centre in Port Erin.

"Friedelind Wagner and Rushen Camp W"

Eva Rieger shares the memories of Friedelind Wagner.
Friday 5th August at 3pm. Tickets: £5

Re-enactment of Jeanette Simon's Concert

By local star performers and introduced by Eva Rieger
Friday 5th August at 7.30pm. Tickets: £10

"Forbidden Friendships"

Dr Chris Rieger shares his memories about his internee childhood.
Saturday 6th August at 11am. Tickets: £5

"Friedelind: Life after Rushen"

Eva Rieger continues Friedelind's fascinating story after the Isle of Man.
Saturday 6th August at 3pm. Tickets: £5

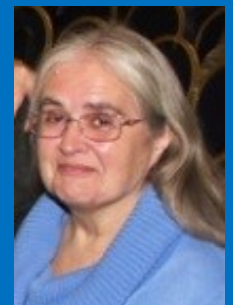
Reserve your tickets now on 321847 or email rushenht@gmail.com



"It was by pure chance that I found Eva!"
- Pam Crowe, HAT Member

"I was researching the Methodist baptismal book of 1940/45 when I came across the name *Rieger* and I recognised it as one of the Lutheran Pastors' names. I searched for *Eva Rieger* online and found a Professor of Music in Lichtenstein - and it was Eva! She is a leading authority on Wagner and, following my invitation, is visiting Port Erin during the festival with her brother and friend, who is the great-granddaughter of Richard Wagner. They will give a series of talks at the Erin Arts Centre, the Methodist chapel where Eva was baptised in 1940."

"I can't wait to meet Eva Rieger and her family to learn more about her time here."



- Doreen Moule, Internment HAT Chair

We are absolutely thrilled to welcome Eva Rieger and her family and to learn more about the experiences of both adult and child internees. Her expert knowledge on Friedelind Wagner will offer a detailed insight into the life of a fascinating lady. The concert, kindly organised by John Bethell and performed by accomplished local artists, will be an added bonus which will enhance a spectacular programme.

Thankyou to our partners

We couldn't tell the stories of our local heritage without the support of our wonderful volunteers, donations that we receive and the organisations and trusts who help us in so many ways. This year we are proud to announce that our projects will be sponsored by Culture Vannin, The Elizabeth Clucas Charitable Trust, The Isle of Man Arts Council, Gough Ritchie, 3FM, Manx Radio and the Manx Lottery Trust.



Our Isle of Man Walks app has been sponsored by both the Gough Ritchie Trust and Manx Lottery Trust and we were the lucky winners of a 3FM advertising competition to market the app. Manx Radio also very kindly allowed us to record the audio for the app in their studios.



Culture Vannin are supporting both the Story of the Land and WW2 Internment books and exhibitions this year and the Isle of Man Arts Council will be supporting our WW2 Internment Exhibition plus the Wagner and Internment Festival.



The Copy Shop and Mannin Group are also great supporters and help us with our printing.



Your donations help us to tell the stories of Rushen. Call Laura on 321847 to find out how you can help.

What's in a place-name?

One of my favourite place names in the south is Marashen Crescent which comes from two Manx Gaelic words; *Magher* meaning field and *aittin* meaning gorse. Over a number of years this has transformed into the term Marashen but originally it meant Gorse Field. This is probably the origin of the number of streets called Marathon in the Island too.

Another name which has become anglicised over the years but whose origins are in the language is Rowany, which is likely to have been originally *eddyr y ghaa Voanee* which means between the two turf lands. This is also the origin of the name Edremony.

Most people will be aware of the *Darrag* Road between Port Erin and Cregneash. This means Oak tree (or area of oak trees) and is found in Ireland in the city name Derry. People might also be aware of the training centre at Nobles called *Keyll Darree* (oak forest / plantation).

Cregneash itself probably come from the Norse for Crooked ness or promontory although folk-etymology leads some to believe that it means *Creg yn aash* or Rock of Rest.

Finally, Bradda and Howe both originate in Norse. The former means steep or broad headland and the latter means hill. The Manx Gaelic for hill is *Cronk*. *Cronk Skybbylt* above Port St Mary might mean Hill of the Barn (from *Soalt* = barn) although I prefer the possibility that it means Hill of Merriment from the Manx work *Skybbylt* which means nimble and which those of you who speak Manx will recognise in *Skibbyltee Boghtey* or Poor Nimble People which is the Manx for tourists!

By Adrian Cain from Culture Vannin

Dates for your diary!

This year we'll also be appearing at the Southern Agricultural Show on 11th and 12th July and at the Royal Agricultural Show on 12th and 13th August.

Come and find us to say hello!



The Story of the Sea - in words and music!

There are many stories of the sea across the Isle of Man from famous shipwrecks to the arrival of the 'Gutter Girls', the annual Queenie Festival and the traditions of seafarers still kept alive today.

Some of the most interesting stories of the sea are based in Rushen and our Story of the Sea HAT are planning a series of evening talks and music this Autumn.

The first evening will take place on Thursday 6th October at the Falcon's Nest and will feature Dessie Robinson on the subject of Herring Fishing, Michelle Heywood on Diving and the Wrecks of the South of the Island plus the story of Captain David Clarke - *"from Cadet to Captain"* and his first trip to sea as a Deck Cadet.

Tickets are available for £5 each and you can book by contacting Laura on 321847 or emailing rushenht@gmail.com

WIN £100 in our Competition

We're still open for entries for our 2017 Calendar Competition - "My Favourite Place in Rushen" for any age group.

It might be an old photograph found in an attic or one you have taken this morning. It could be a poem you've written yourself or even a picture your grandchild has drawn. Whatever it may be, if it's your favourite place in Rushen Sheading then this competition is perfect for you!



"My Favourite Place in Rushen"

Entries can be any image, story or poem based on your favourite place in Rushen. The competition will be judged by public vote during August and the winner will receive £100 in gift vouchers of their choice plus a special framed copy of their entry, which will feature on the front cover. The winner and all eleven runners-up will each receive a copy of the calendar. **The deadline for the competition is Friday 22nd July 2016. To enter or find out more, please visit: www.rushenheritage.org/calendar-competition**

Did you know?

The cliffs of Black Head were once home to smugglers and legend has it that a notorious pirate stored his treasure in the cave of Black Head and a curse was placed on it so that should anyone dare to enter, they would die a terrible death from a plague that was locked inside. So whether it was the fear of a *buggane* or the curse of death, it was certain that not many would dare to enter the cave of Black Head!

If you have any memories, interesting facts or stories you would like to share, drop Laura a line at rushenht@gmail.com!

2016 Events Programme



Isle of Man Walks: Launch Weekend

sponsored by the Manx Lottery Trust and Gough Ritchie Trust

Saturday 30th April at the Sound Café from 10am

Search Isle of Man Walks in your app store and download the free app. See the pictures, hear the audio and learn about nature as you immerse yourself in the beautiful landscape between Port St Mary and the Sound.



Free Exhibition: Southern Tourism Across the Decades

St Catherine's Church in Port Erin

Saturday 28th May to Wednesday 15th June, 10am - 4pm

A wonderful opportunity to reminisce about the local activities and entertainment venues Rushen had to offer through a stunning collection of images, stories and memories from across the decades.



WW2 Internment Book Launch: "Friend or Foe?"

sponsored by Culture Vannin

St Catherine's Church in Port Erin on Sunday 29th May, 1pm

Based on the first instalment of our WW2 Internment Exhibition, discover the stories of the women and children interned within Rushen Camp W from 1940 to 1941 and the landladies who shared their lives and homes with them.



Book Launch: "A Year on Ballachurry Farm"

sponsored by Culture Vannin

Port St Mary Town Hall from Saturday 9th July, 1pm

A wonderfully humorous account of the farming year, written by Captain of the Parish, Stanley Clucas, about the farm that has been in his family for almost a hundred years.



Free Exhibition: "A Year on Ballachurry Farm"

sponsored by Culture Vannin and the Elizabeth Clucas Charitable Trust

Port St Mary Town Hall from Saturday 9th to Tuesday 26th July, 10am - 4pm

Based on the book by Stanley Clucas, this exhibition is a wonderful way to explore the stories of farming life in the 1940s and a chance to discover the way life on a farm used to be.



Free Exhibition: "Friend or Foe? 1941 to 1942"

sponsored by the IOM Arts Council and Culture Vannin

St Catherine's Church in Port Erin from Thursday 28th July to Wednesday 24th August, 10am - 4pm

Our second instalment of this unmissable exhibition explores stories of Rushen Camp W and the creation of the world's only Married Camp in WW2 plus our Wagner and Internment Festival from the 5th-7th August at the Erin Arts Centre in Port Erin.

keep updated on event dates at www.rushenheritage.org