



# BOREHOLE PROFILE LOG

**COMPANY** SUCCESS OIL COMPANY  
**WELL** AMOCO CRAWFORD NO. 1  
**FIELD** CRAWFORD  
**PROVINCE/COUNTY** WARD  
**COUNTRY/STATE** U.S.A. / TEXAS  
**LOCATION** 467' FNL & 853' FWL  
**SEC 18, BLK B20, A-1004, PSL SURVEY**

**SEC** 18 **TWP** RGE Other Services  
 MILE MMR  
**API Number** 42-475-33523  
**Permit Number** 682928  
**Permanent Datum** G.L., Elevation feet  
**Log Measured From** G.L. above Permanent Datum  
**Drilling Measured From** K.B.

Date	26-JUL-2009	Elevations:	feet
Run Number	ONE	KB	
Depth Driller	5398.00	DF	
Depth Logger	5382.00	GL	
First Reading	5348.00		
Last Reading	3542.00		
Casing Driller	3600.00		
Casing Logger	3542.00		
Bit Size	4.75		
Hole Fluid Type	BRINE		
Density / Viscosity			
PH / Fluid Loss			
Sample Source	PIT		
Rm @ Measured Temp	0.065 @ 75.0		ohm-m
Rmf @ Measured Temp	0.049 @ 75.0		ohm-m
Rmc @ Measured Temp	0.081 @ 77.0		ohm-m
Source Rmf / Rmc	CALC		CALC
Rm @ BHT	0.053 @ 95.0		ohm-m
Time Since Circulation	3.0 HOURS		
Max Recorded Temp	95.00		deg F
Equipment Name	COMPACT		
Equipment / Base	13072		4352
Recorded By	B. McCLAIN		J. LLANAS
Witnessed By	MR. DAN GREY		
Last Title	Last Line		Last Line

## REMARKS

SERVICE ORDER No. 3512405  
 ANNULAR VOLUME CALCULATED WITH 4" O.D. LINER  
 DENSITY POROSITY CALCULATED USING LIMESTONE MATRIX (2.71 gm/cc).  
 RIG: AMERICAN PRODUCTION SERVICES NO. 801  
 THANK YOU FOR USING "WEATHERFORD".

## BOREHOLE RECORD

Last Edited: 26-JUL-2009 22:54

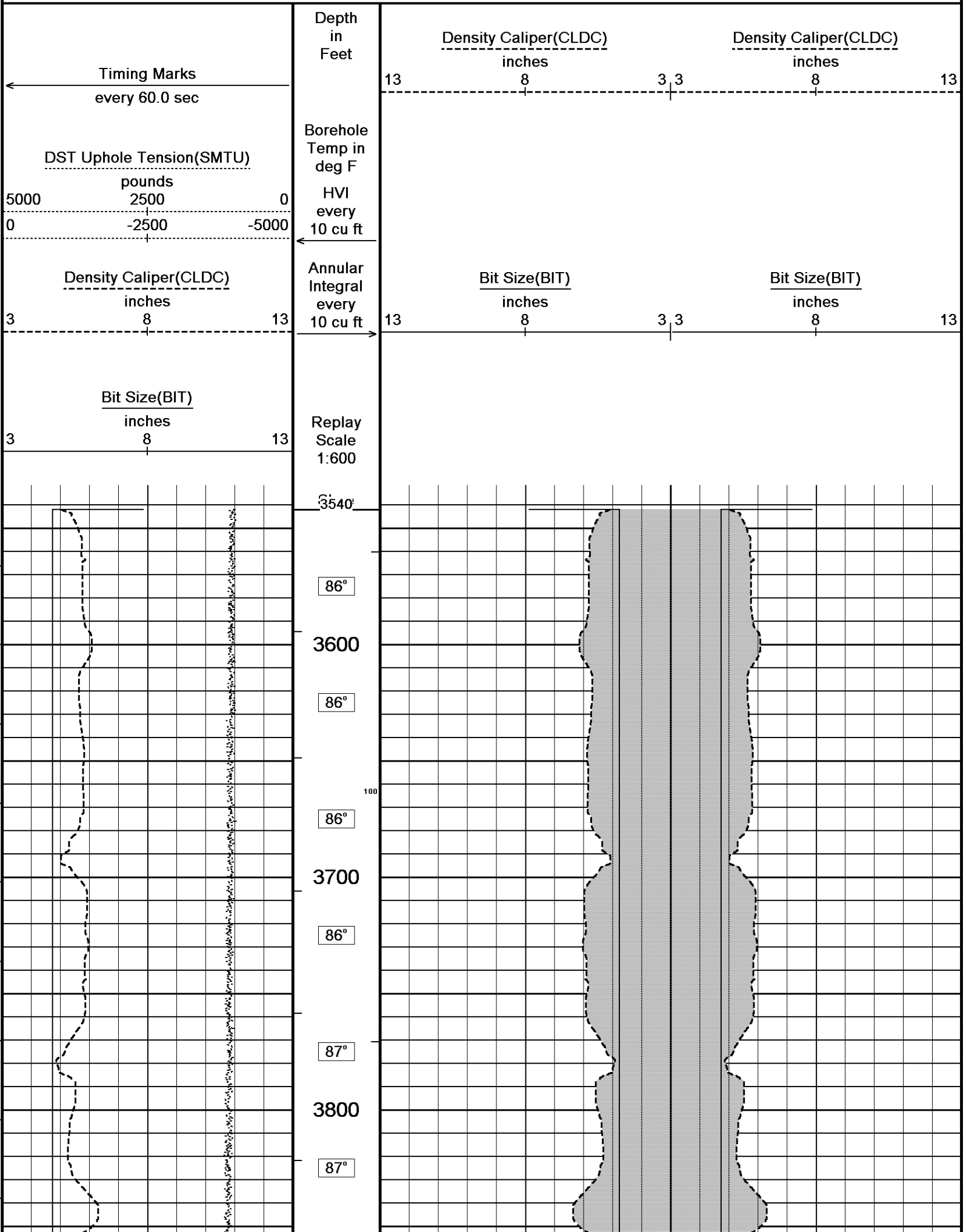
Bit Size inches	Depth From feet	Depth To feet
7.865	0.00	3542.00
4.750	3542.00	5382.00

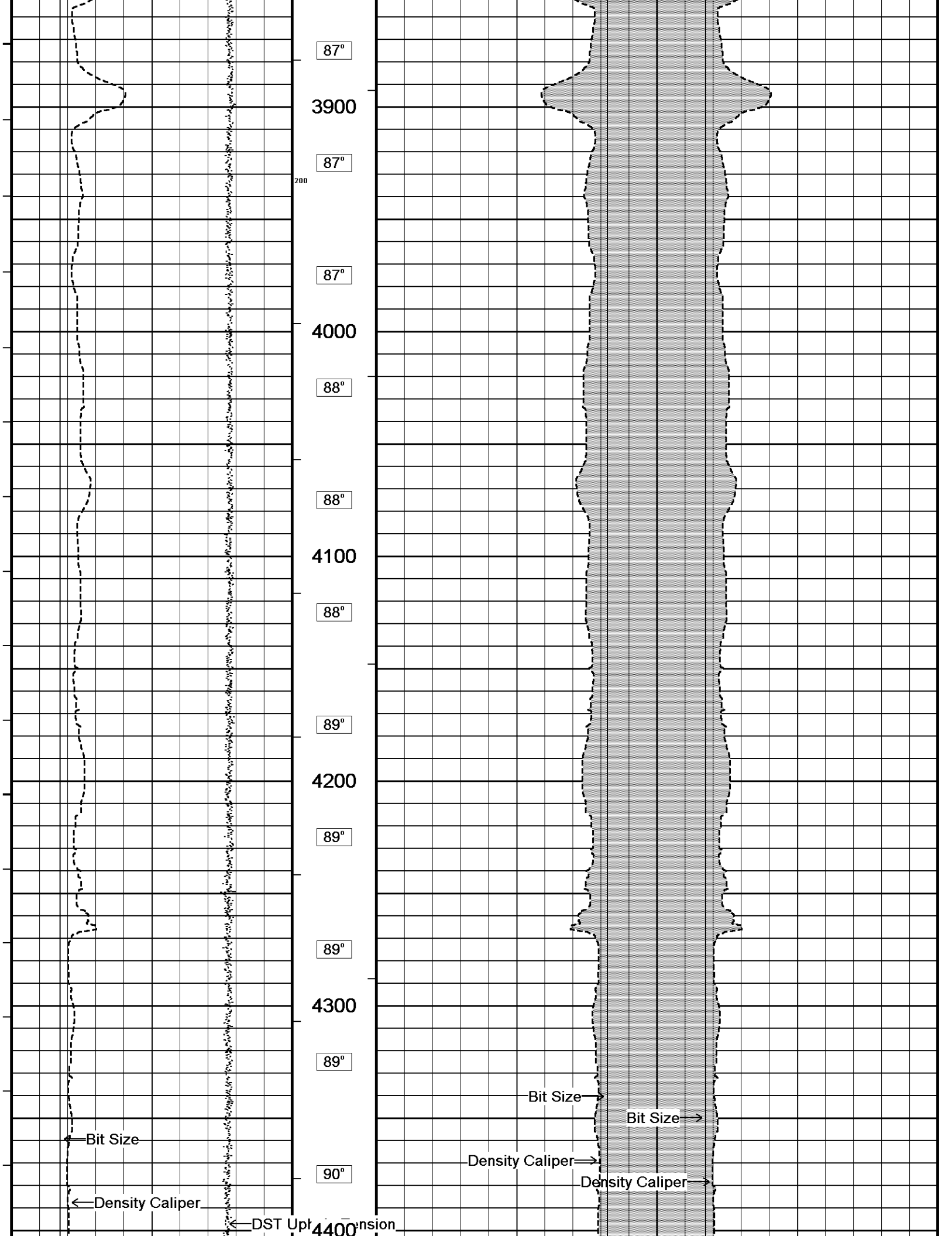
## CASING RECORD

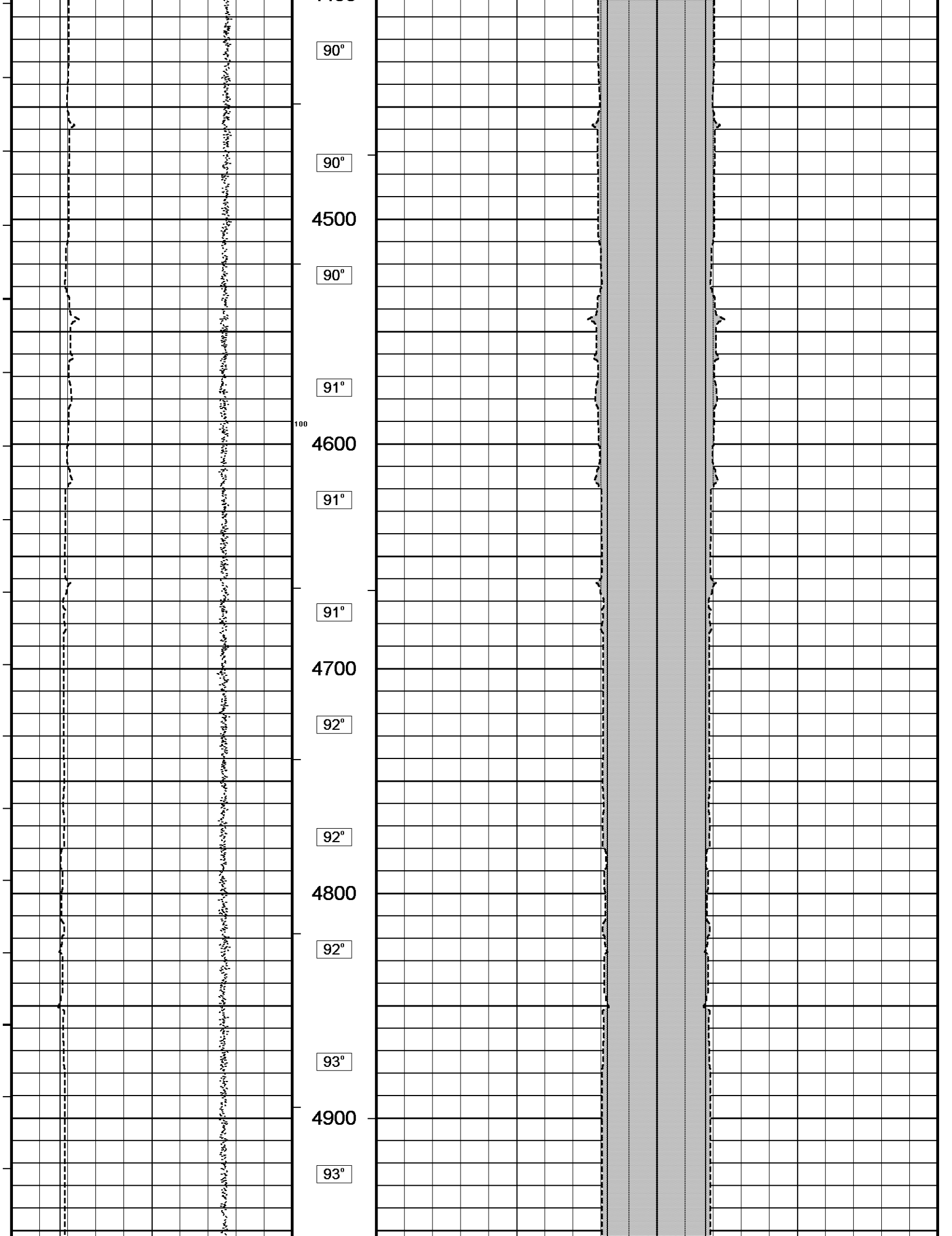
Type	Size inches	Depth From feet	Shoe Depth feet	Weight pounds/ft
	5.500	0.00	3542.00	15.50

All interpretations are opinions based on inferences from electrical or other measurements and we cannot, and do not, guarantee the accuracy or correctness of any interpretations, and we shall not, except in the case of gross or wilful negligence on our part, be liable or responsible for any loss, costs, damages or expenses incurred or sustained by anyone resulting from any interpretation made by any of our officers, agents or employees. These interpretations are also subject to our general terms and conditions in our price schedule.

## 2 INCH MAIN PASS







90°

90°

4500

90°

91°

100

4600

91°

91°

4700

92°

92°

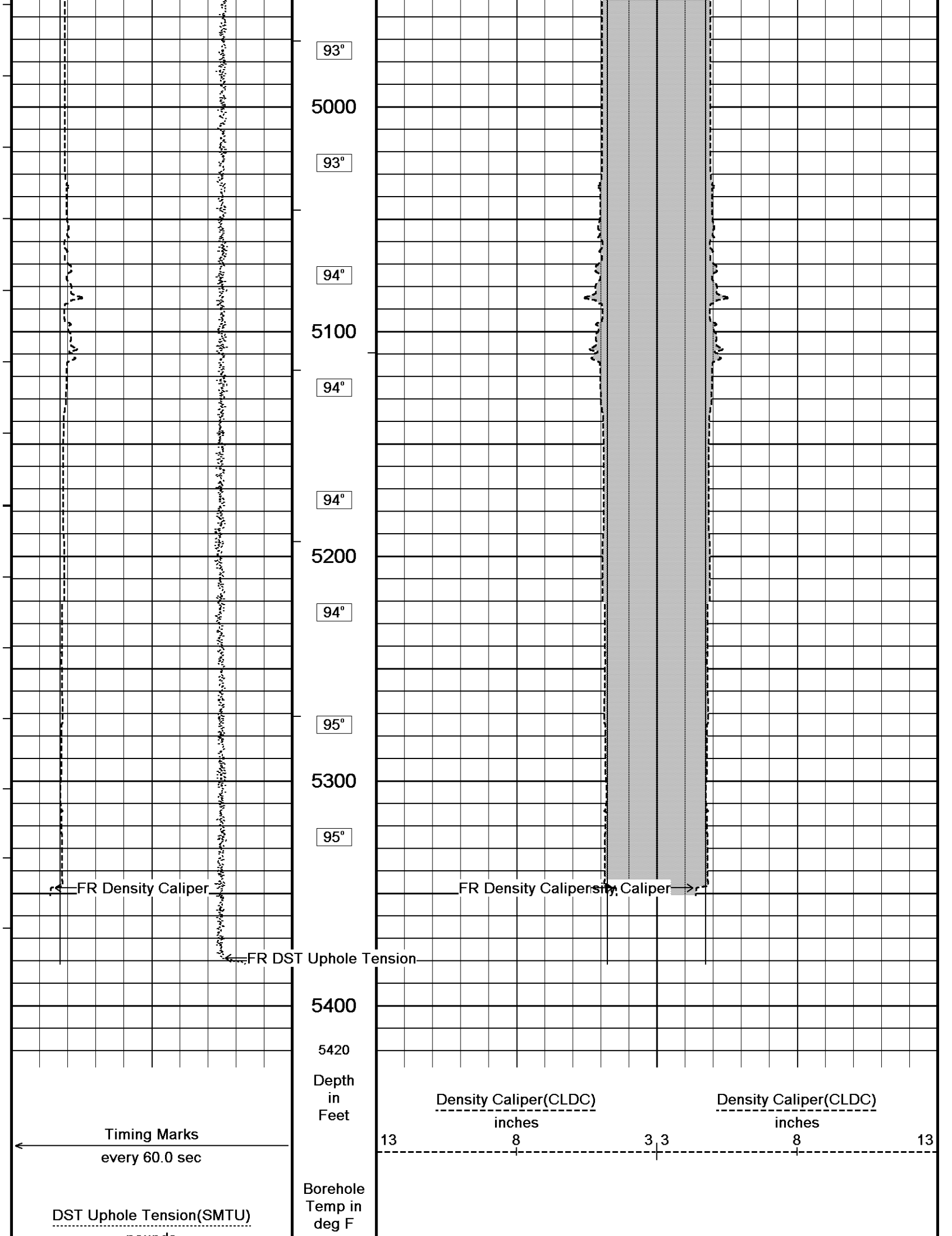
4800

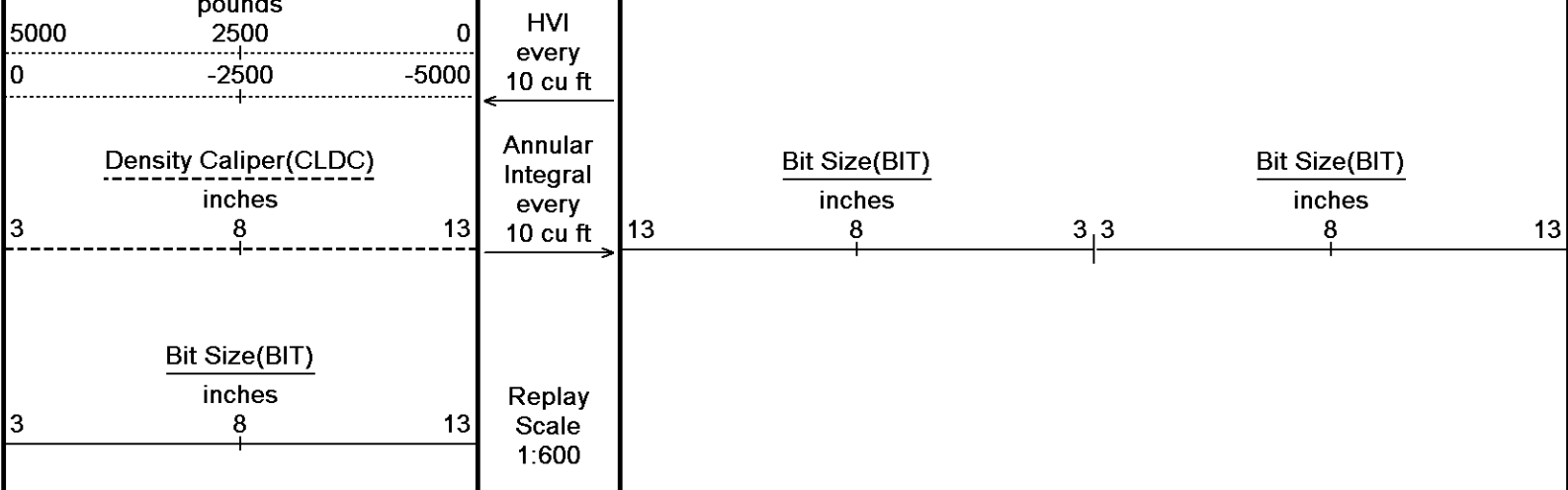
92°

93°

4900

93°





Depth Based Data - Maximum Sampling Increment 10.0cm  
 Plotted on 27-JUL-2009 19:16  
 Filename: C:\DOCUME~1\TEMP\LOCALS~1\Temp\Weatherford PreView\0\CRAWARD 1\_002.dta  
 Recorded on 26-JUL-2009 17:05  
 System Versions: Logged with 8.05.0177 Processed with 8.05.0177 Plotted with 8.01.0191

↑ **2 INCH MAIN PASS** ↑

**DOWNHOLE EQUIPMENT**  
 C:\DOCUME~1\TEMP\LOCALS~1\Temp\Weatherford PreView\0\CRAWARD 1\_002.dta

Compact Stiff Bridle Electrode Sub.  
 MBE 3 Length: 12.33 ft Weight: 77.2 lb

Compact Stiff Bridle Electrode Sub.  
 MBE 114 Length: 12.33 ft Weight: 77.2 lb

Compact Gamma  
 MCG 205 Length: 8.70 ft Weight: 63.9 lb

Compact Neutron  
 MDN 60 Length: 5.04 ft Weight: 50.7 lb

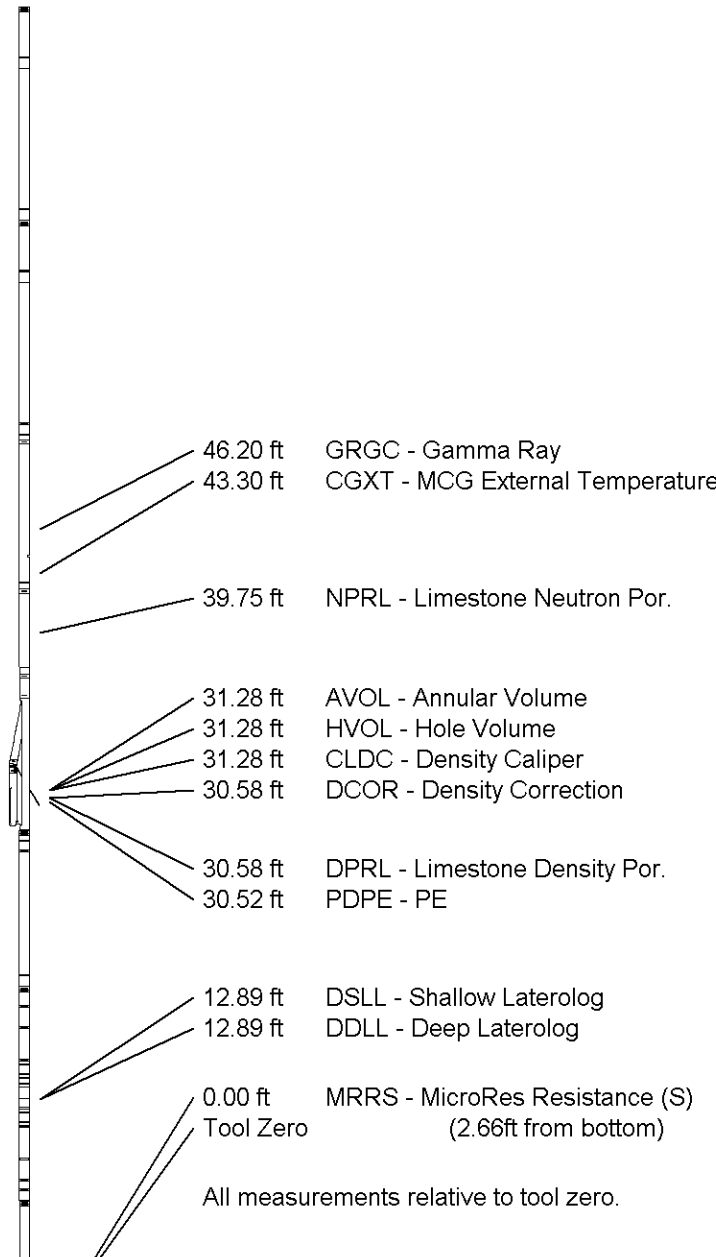
Compact Density/Caliper  
 MPD 179 Length: 9.59 ft Weight: 90.4 lb

Compact Upper Guard Sub.  
 MUG 15 Length: 8.98 ft Weight: 68.3 lb

Compact Laterolog Electrode Sub.  
 MLE 108 Length: 12.34 ft Weight: 92.6 lb

Compact Micro-Resistivity  
 MMR 130 Length: 8.59 ft Weight: 81.6 lb

Compact Hole Finder  
 HFS 1 Length: 0.78 ft Weight: 2.2 lb



Total Length: 78.68 ft Weight: 604.1 lb



COMPANY	SUCCESS OIL COMPANY
WELL	AMOCO CRAWARD NO. 1
FIELD	CRAWARD
PROVINCE/COUNTY	WARD
COUNTRY/STATE	U.S.A. / TEXAS

Elevation Kelly Bushing	feet	First Reading	5348.00	feet
Elevation Drill Floor	feet	Depth Driller	5398.00	feet
Elevation Ground Level	feet	Depth Logger	5382.00	feet



**Weatherford**<sup>®</sup>

BOREHOLE PROFILE LOG